



McMurdo Station



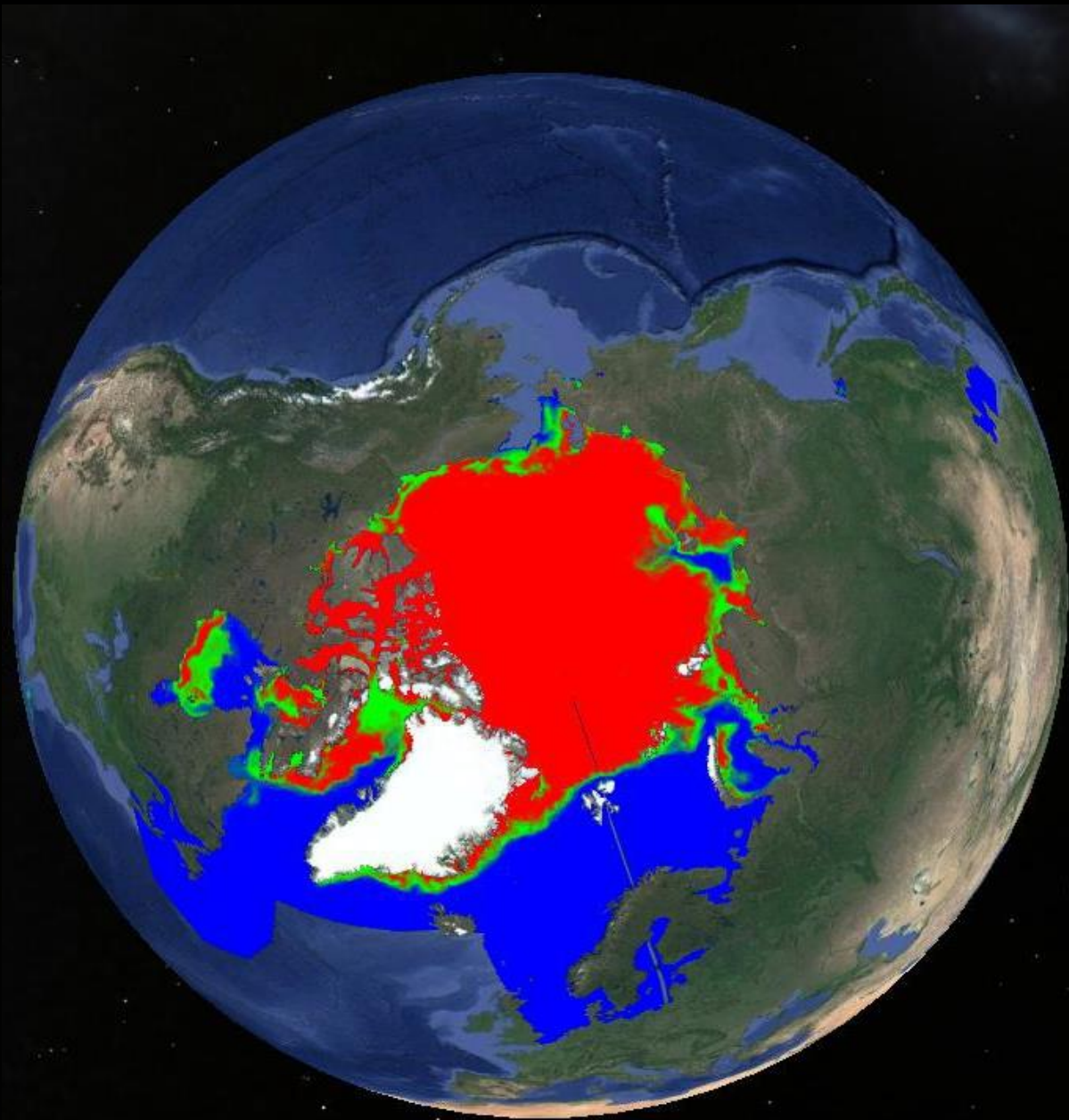
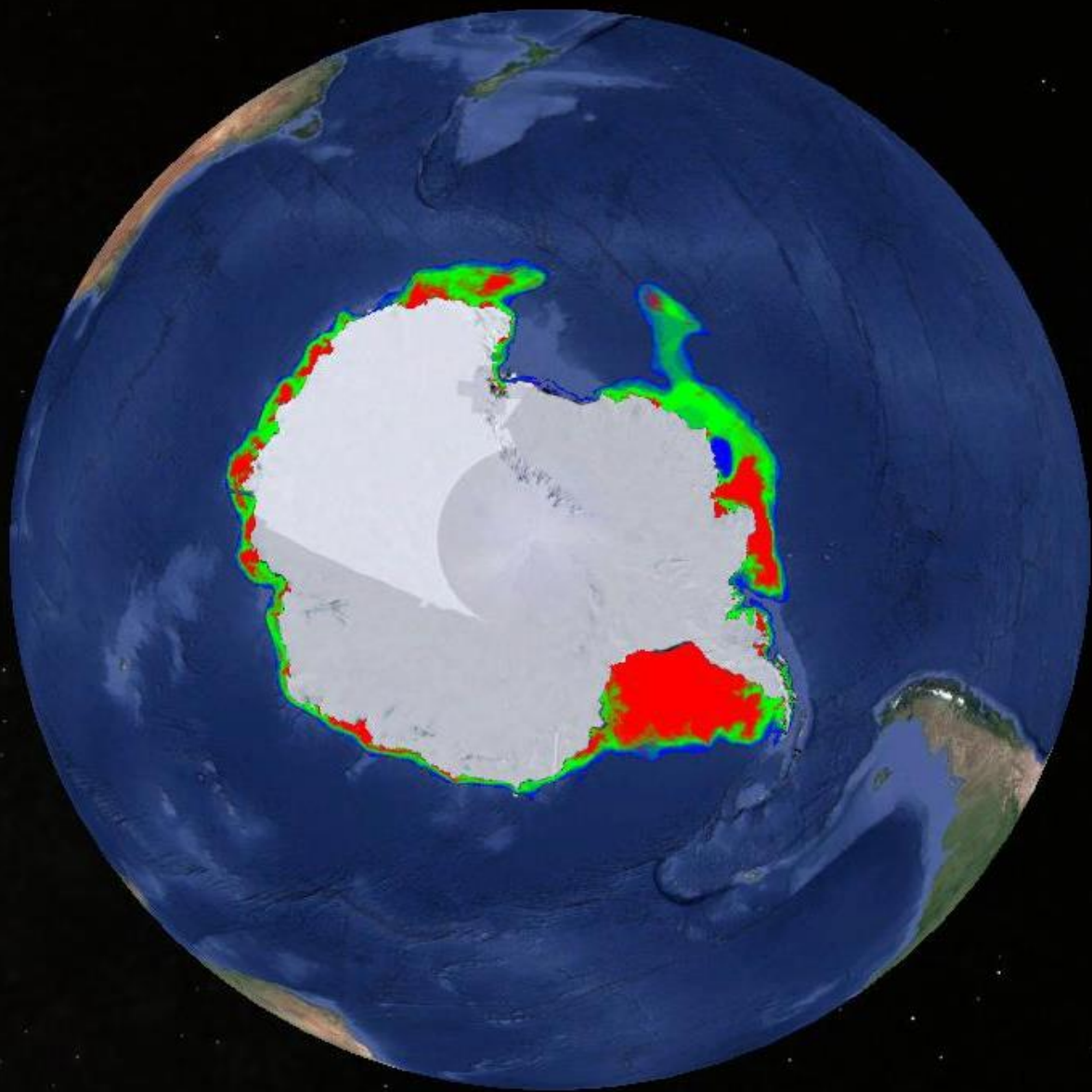
Antarctica

A11



Link – video OP CASTLE – Below 60 S

<https://youtu.be/2eCgCvdOR7s>

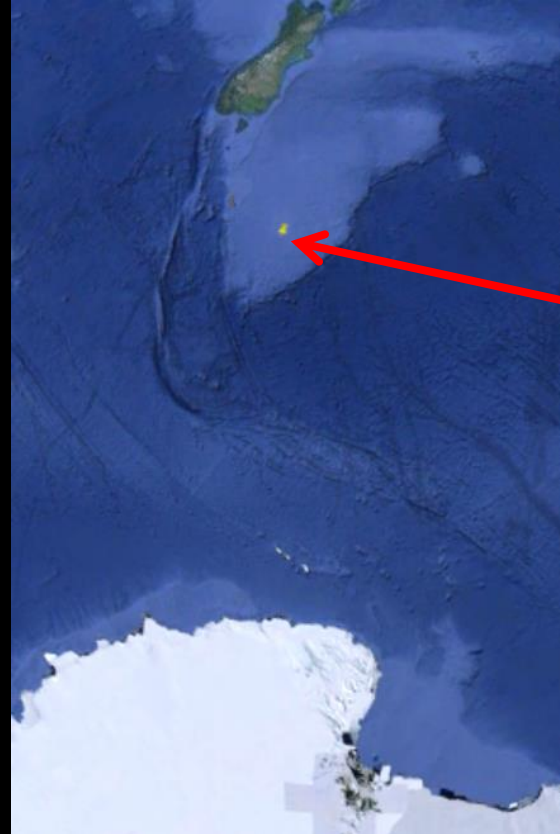


Link - The real Southern Ocean

<https://youtu.be/ET9nv1jpghY>



# Wave observations at Campbell Island



## scientific data

[www.nature.com/scientificdata](https://www.nature.com/scientificdata)

Check for updates

OPEN

DATA DESCRIPTOR

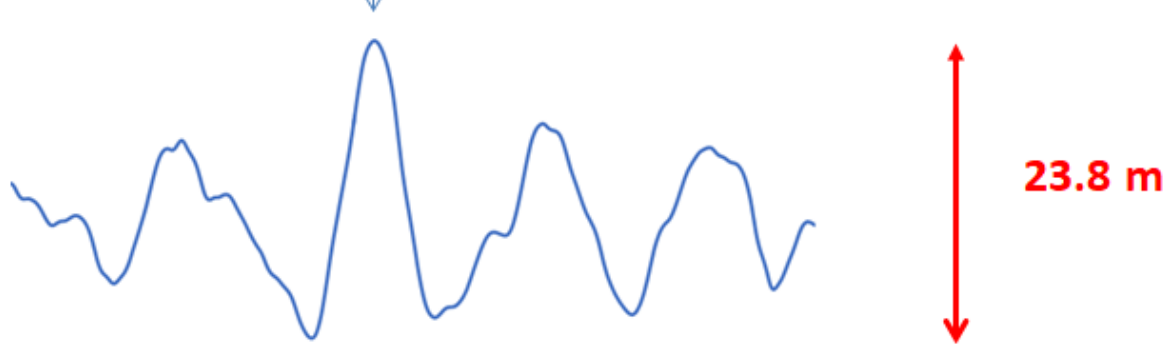
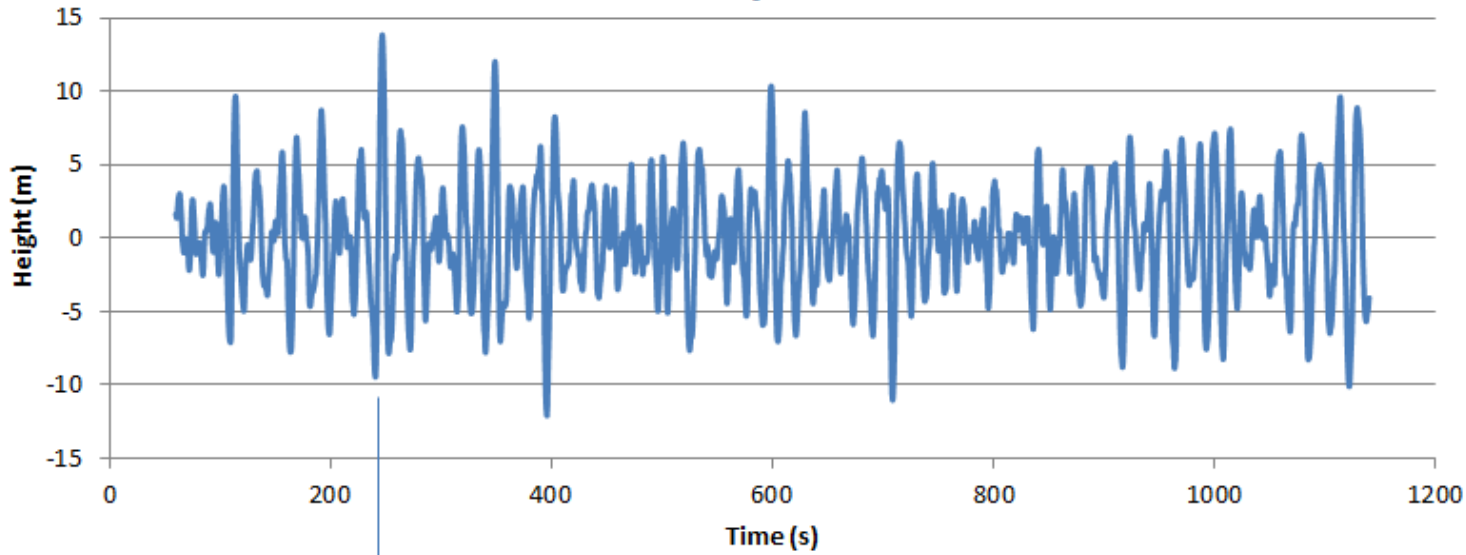
### Directional wave buoy data measured near Campbell Island, New Zealand

Peter McComb<sup>1</sup>✉, Sally Garrett<sup>2</sup>, Tom Durrant<sup>1</sup> & Jorge Perez<sup>3</sup>

The New Zealand Defence Force (NZDF) has established a permanent wave observation station near Campbell Island, south of New Zealand (52 45.71 S, 169 02.54E). The site was chosen for logistical convenience and its unique location adjacent to the highly energetic Southern Ocean; allowing instrumentation typically deployed on the continental shelf to be used in this rarely observed southern environment. From February 2017, a Triaxys Directional Wave Buoy was moored in 147 m depth, some 17 km to the south of the island, with satellite telemetry of the 2D wave spectra at 3-hourly intervals. To date there have been three deployments on locations, yielding some 784 days of data. Validation of the measured significant wave height against co-located satellite altimeter observations suggests that the predominant wave directions are not attenuated by the island. The data provide a valuable record of the detailed wave spectral characteristics from one of the least-sampled parts of the Global Ocean.

784 days of data so far

8 May 2018



## Seven-storey high wave

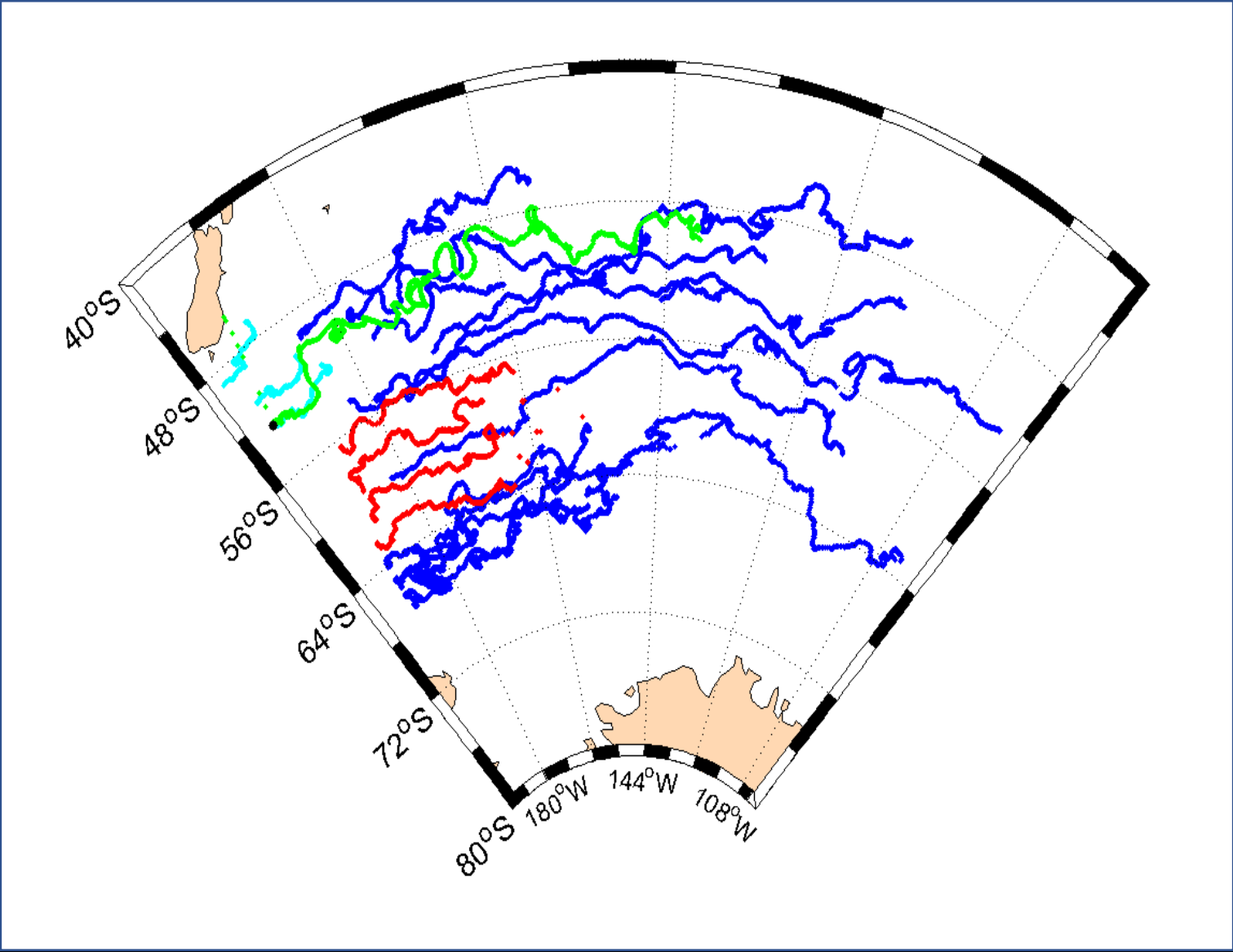
The largest wave yet recorded in the Southern Ocean was detected around midnight last night. It reached over 23m high, about the height of a seven-storey building.

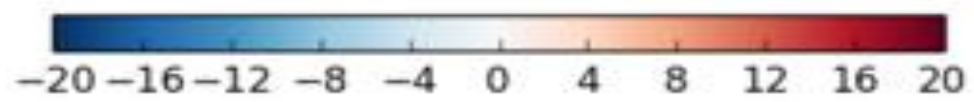
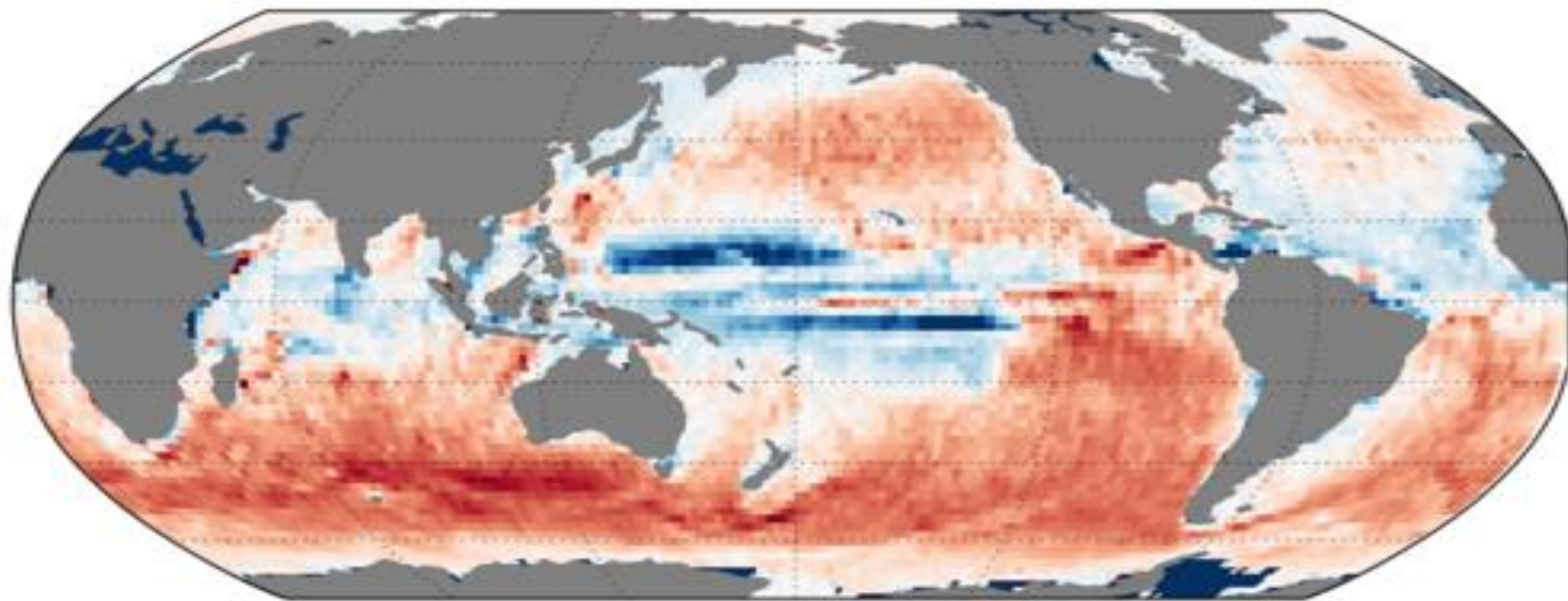


*Southern Ocean*

Endeans Building, corner  
of Queen and Quay Sts,  
Auckland







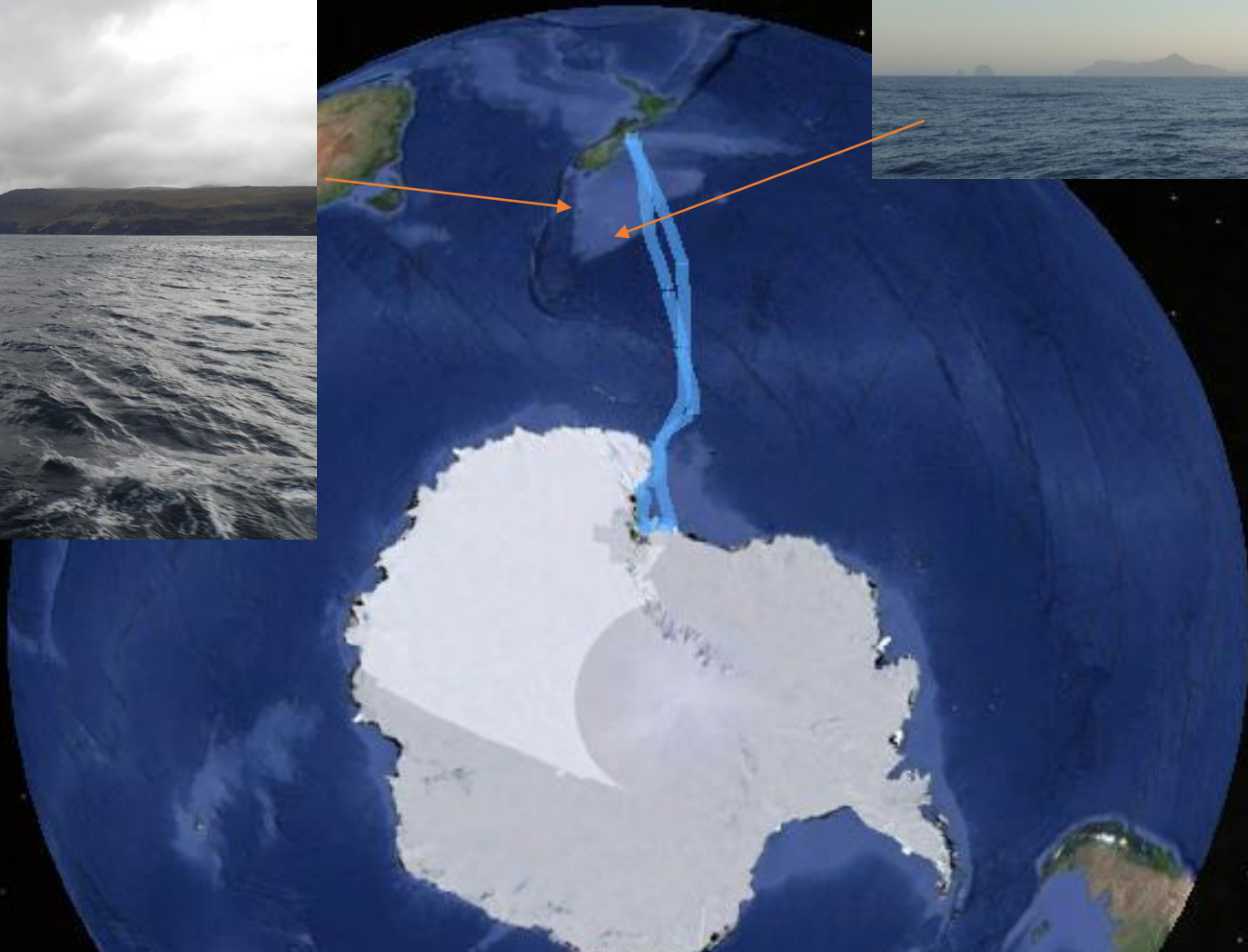




Link - Resupplying Antarctica

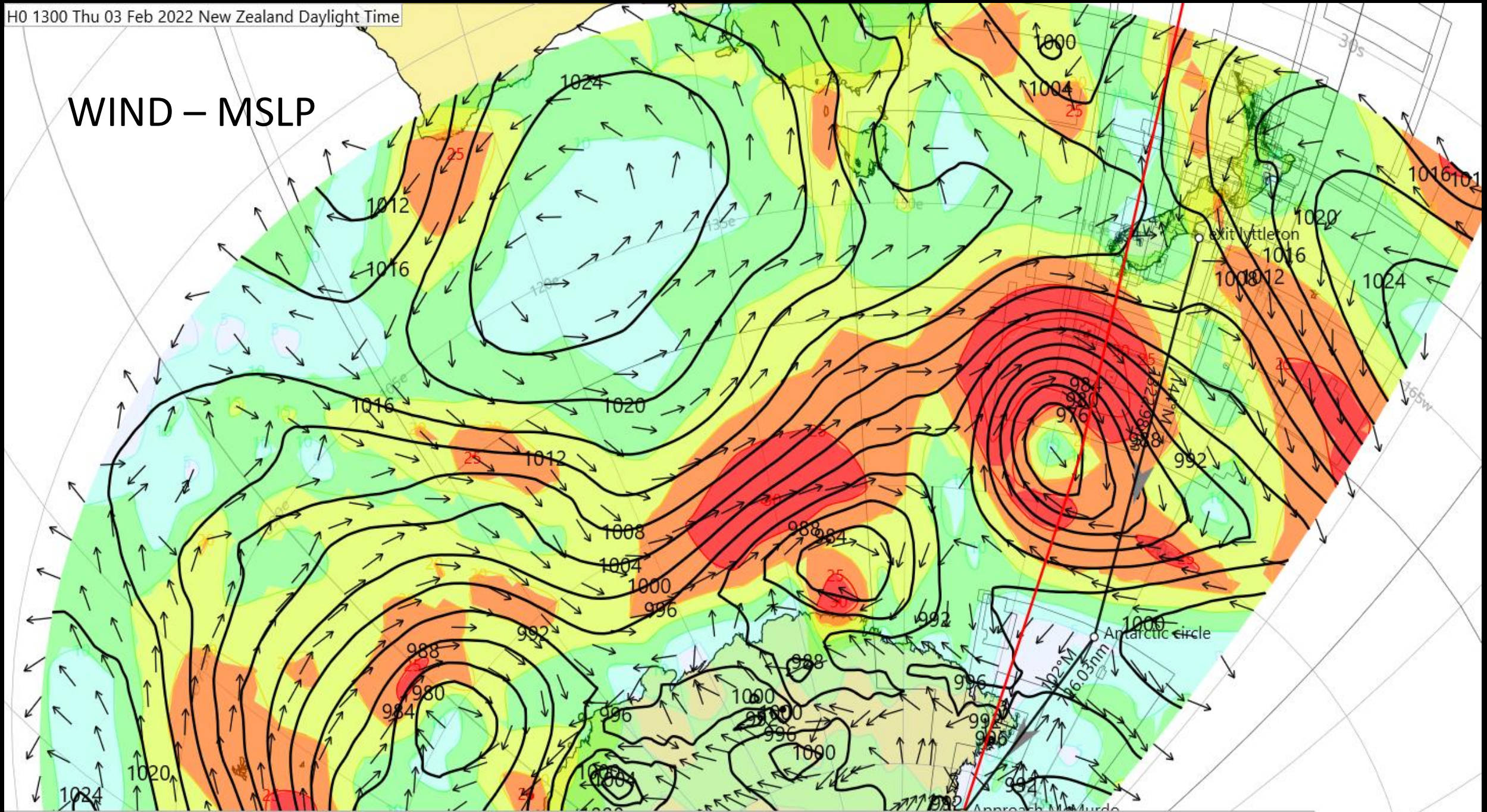
<https://youtu.be/YtPUMIToS4E>





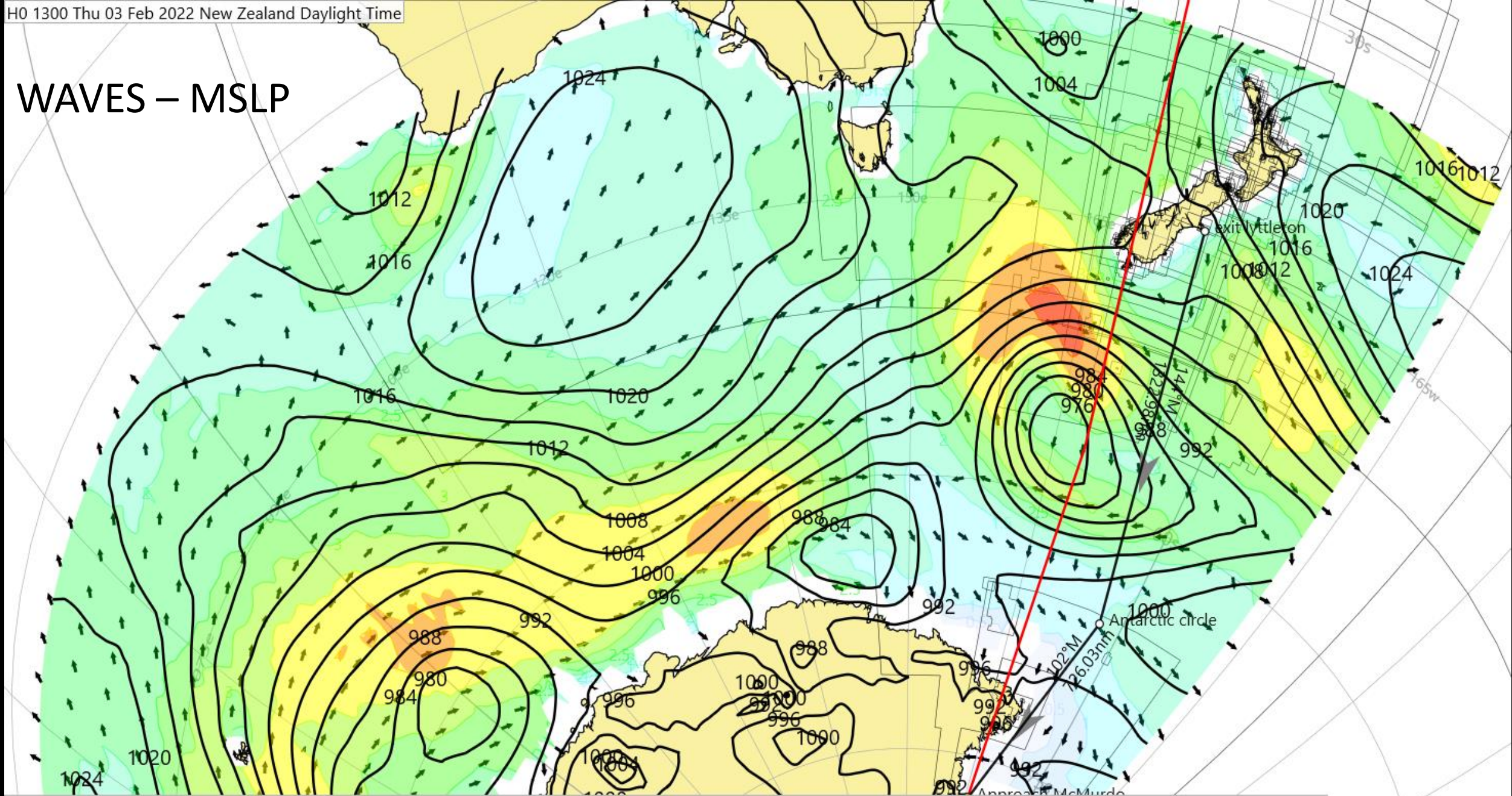


# WIND – MSLP

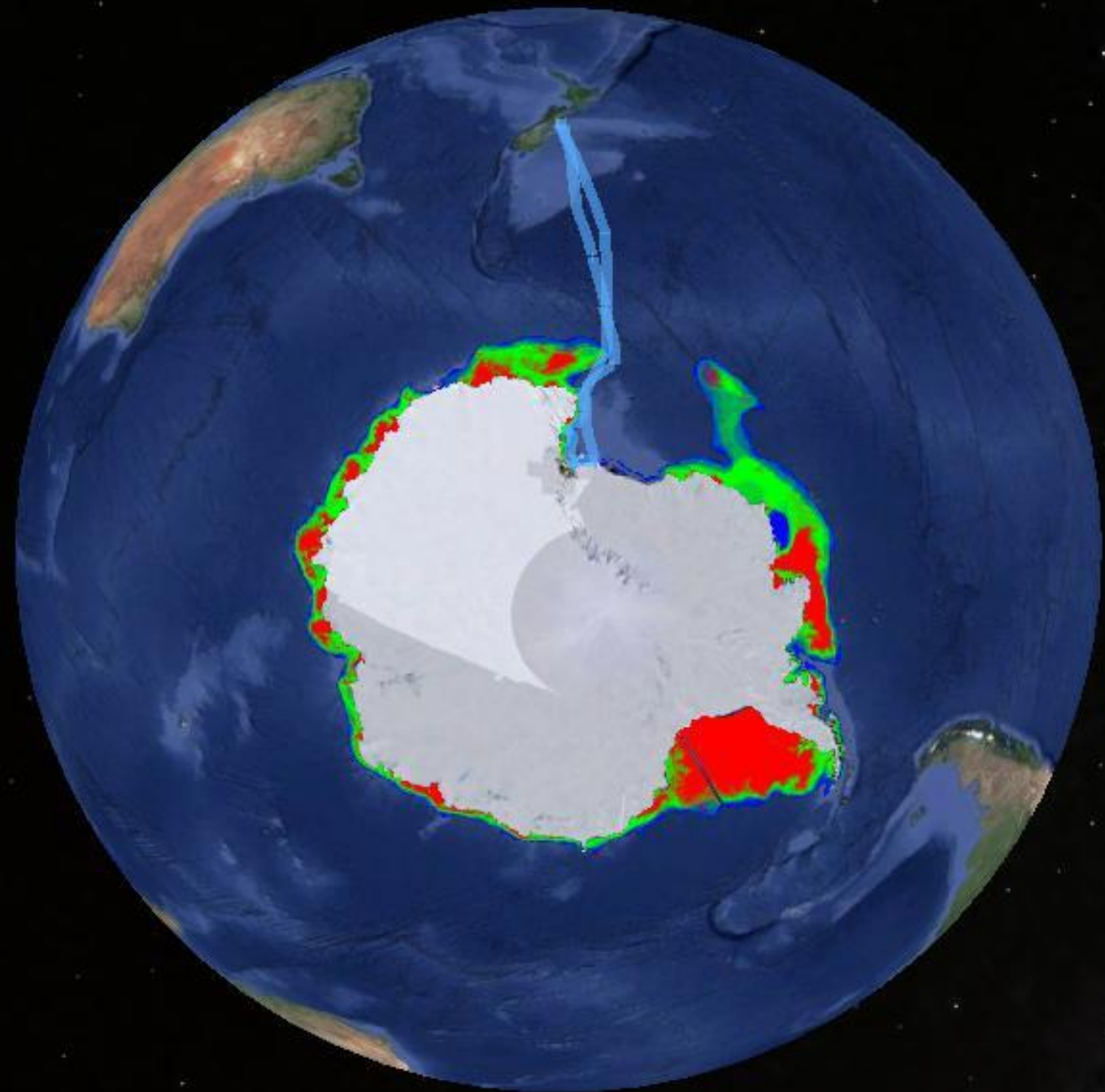


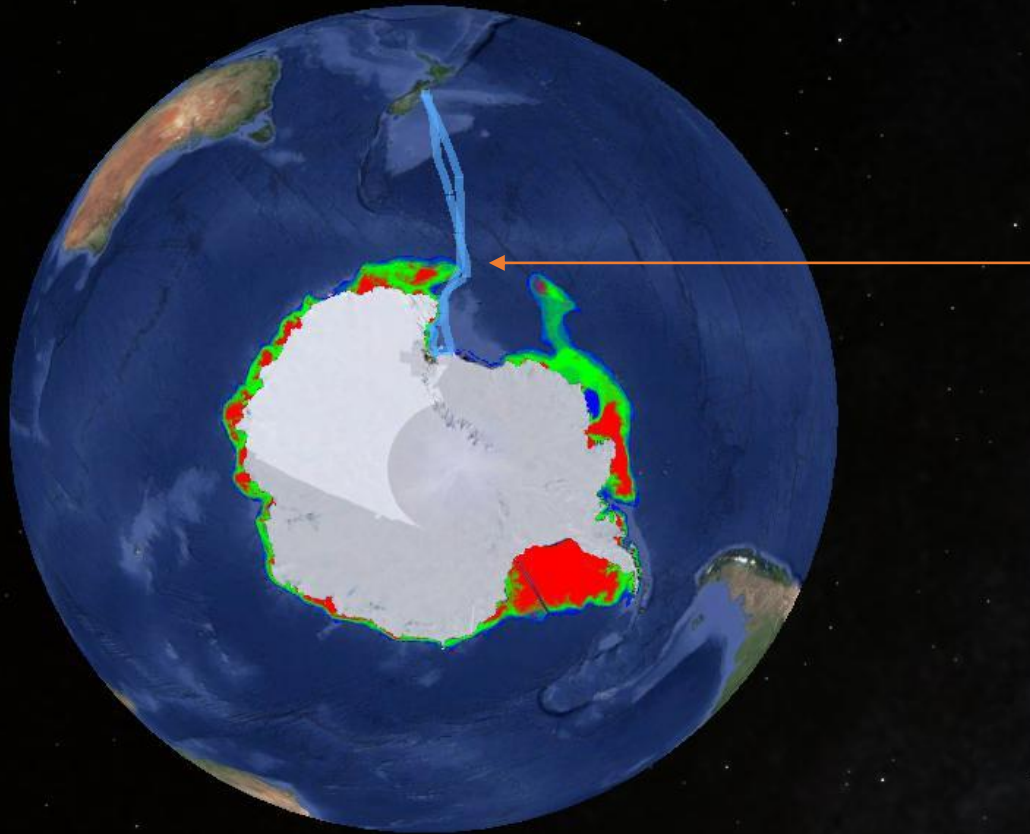


# WAVES – MSLP



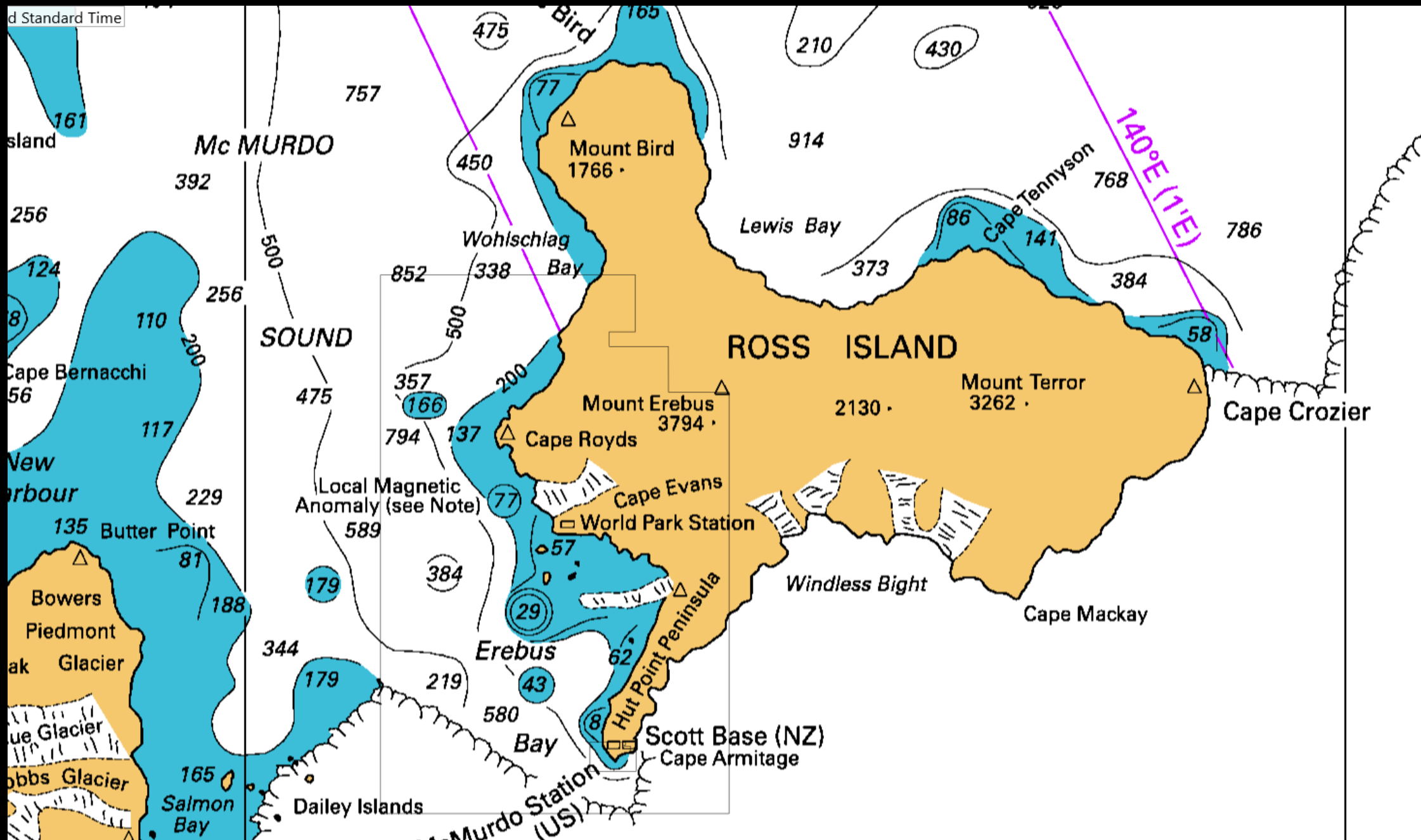




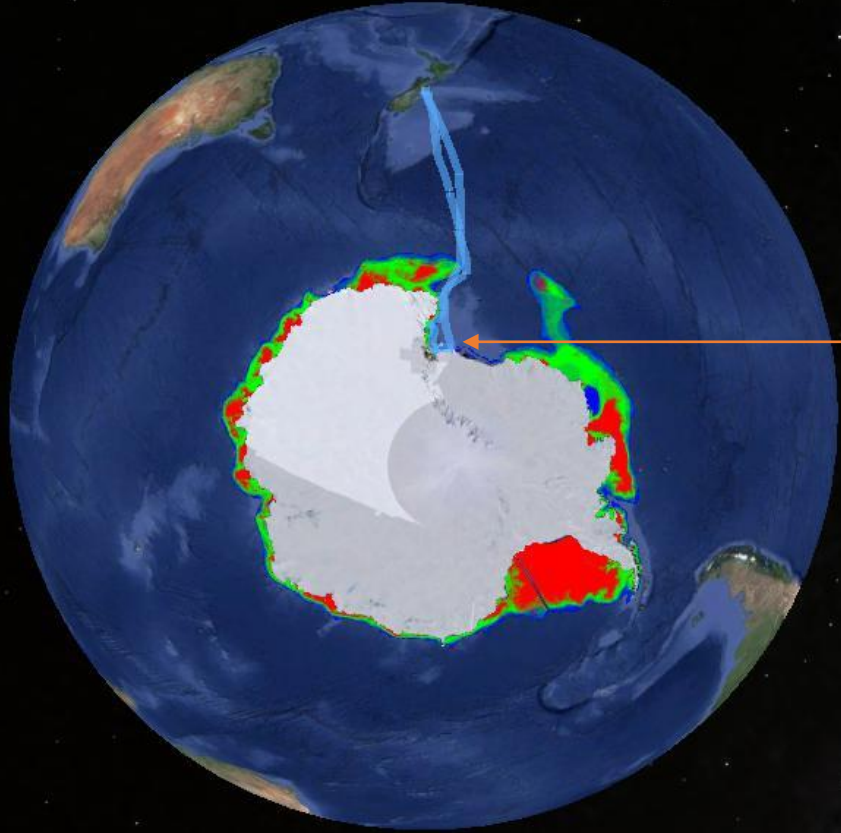


Scott Island - 67° 22' 42" S, 179° 54' 42" W

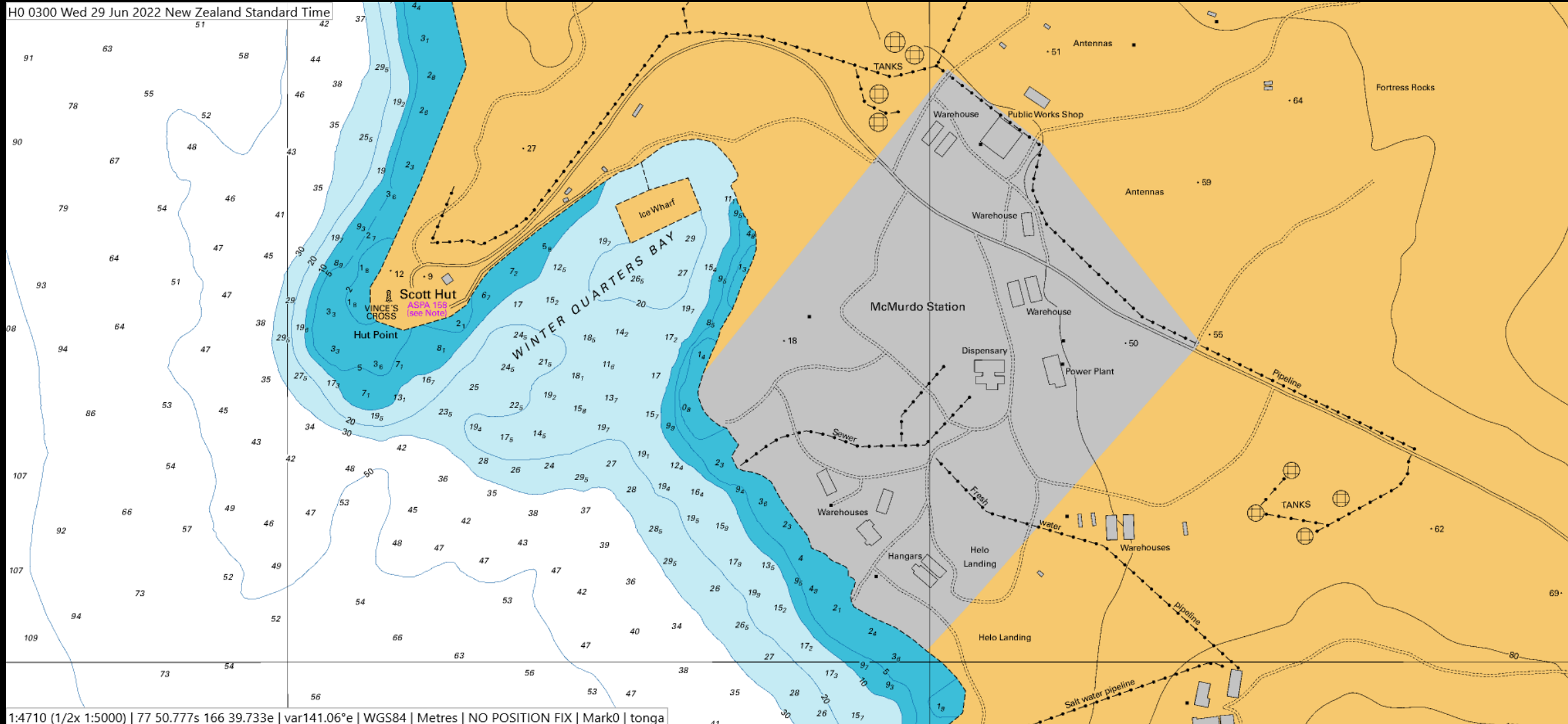
Standard Time







HO 0300 Wed 29 Jun 2022 New Zealand Standard Time



1:4710 (1/2x 1:5000) | 77 50.777s 166 39.733e | var141.06°e | WGS84 | Metres | NO POSITION FIX | Mark0 | tonga



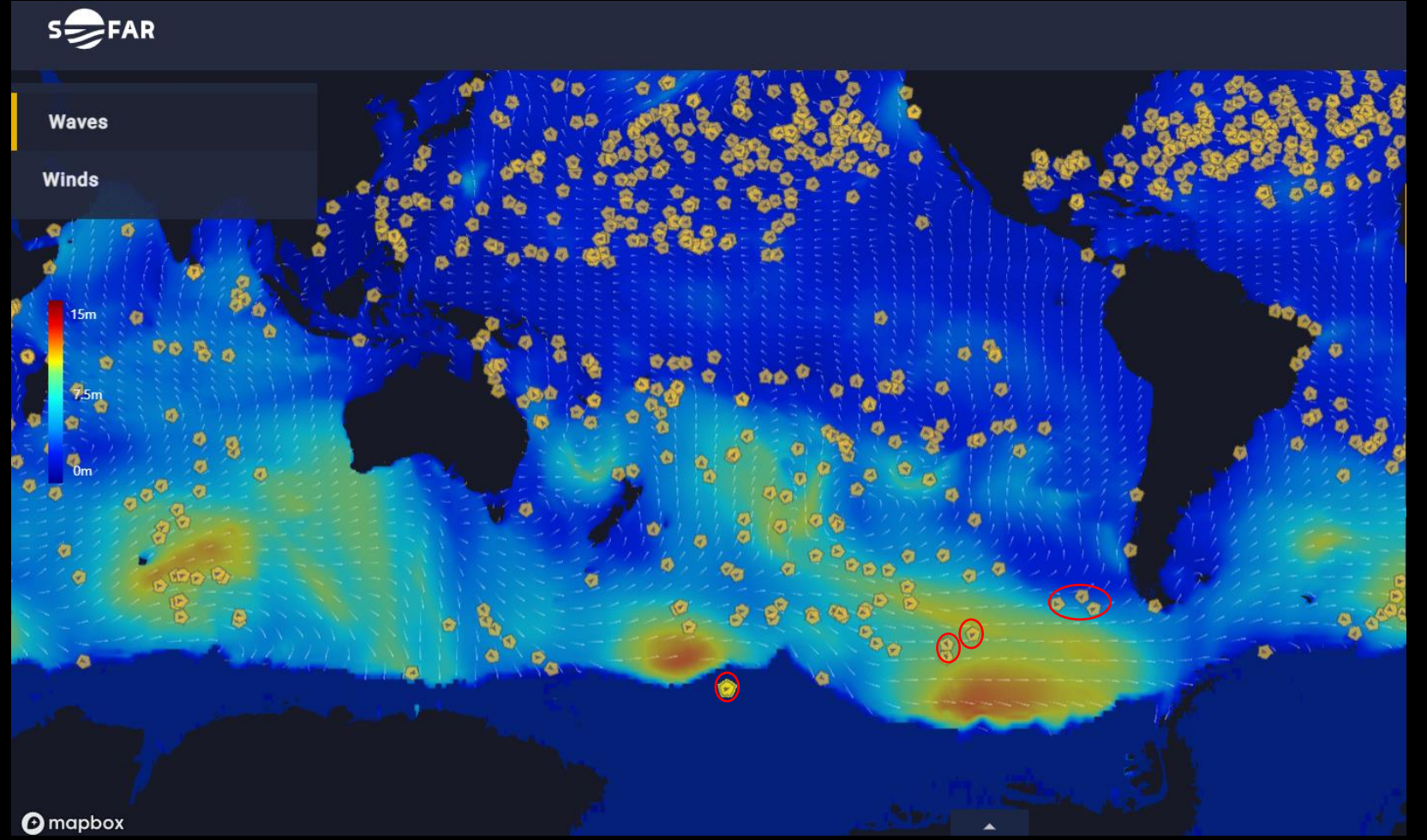
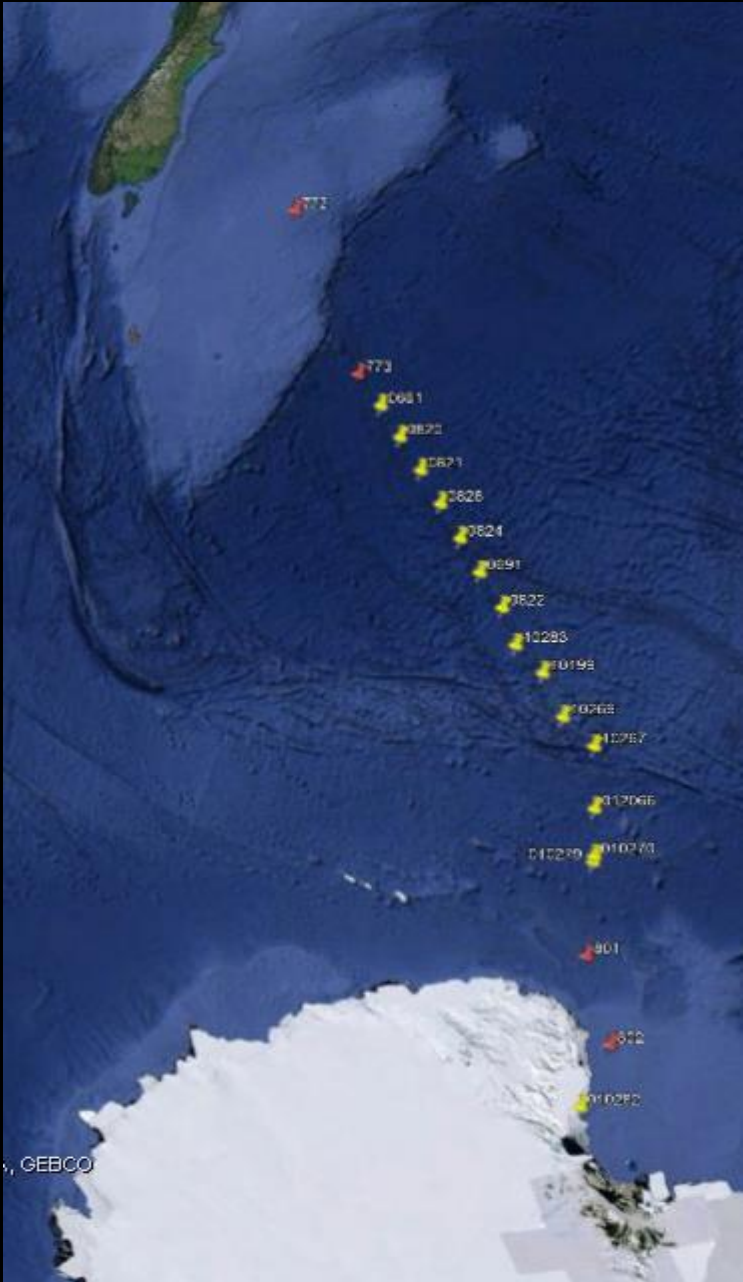


Link - Southern Ocean science

<https://youtu.be/ctkekiXBh4w>







<https://weather.sofarocan.com/>







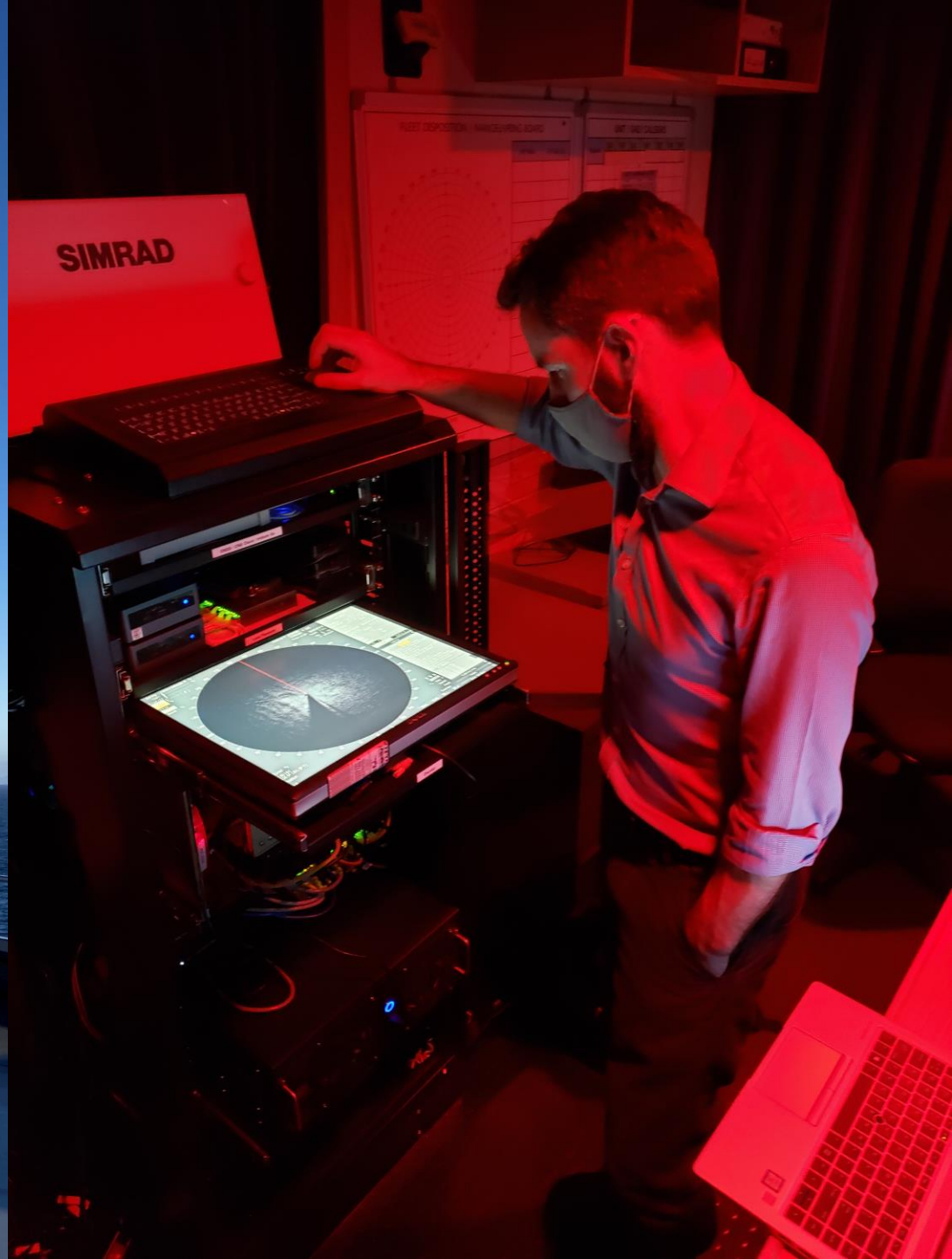












hnell

Bridge General Check-Offs

Bridge Emergency Check-Offs

OFF CARDS

HAZ INCORRECT

BRIDGE DISPLAY #1  
RICHARD HALL FUNCTION

N-UP RM(T) SEA STAB

Range 3 NM  
Rings OFF

Profile: Last Settings  
Chart ON  
Coastline

Target Name	ID	Source	RNG	BRG	T CTW	T STW
---	208	TT	4.96 NM	058.1°	124.9°	0.2 kn

Navigation software interface showing a map with various icons and data. The interface includes a toolbar with numerous icons for navigation and display control. A small inset map shows a larger geographical context. The bottom right corner displays the ship's position: Own Ship 74°43'58 S.































