

# Father & Son (& Brother)

Sailing Sea Wolf NZL from South Australia to New Zealand





Preparation  
in Fremantle





Skipper Gareth  
and crew Steve

Powered up, cutter  
gear, NB kayak on deck



Sea Wolf's tracker 2018  
– 2022 as far as  
Esperance, WA.





Drone shot -  
Where's the kayak?











Mark McRae provided Gareth with excellent advice on route planning WA through to NSW



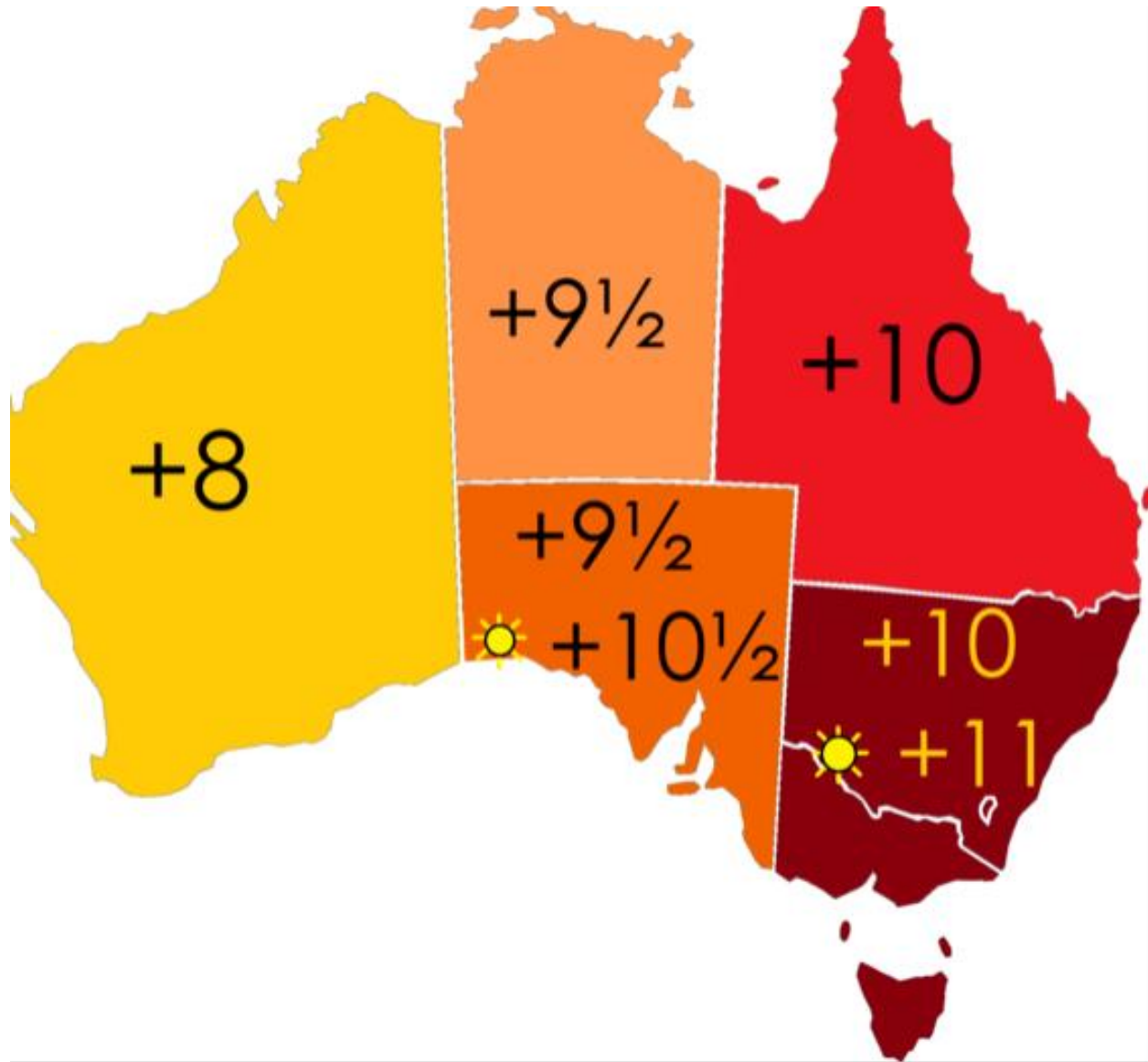
Early March 2022 at Port Lincoln, South Australia, Steve Sea Wolf's crew has to head home. Skipper continues solo, or ...?

Lots of repairs and maintenance:  
Engine: water pump, exhaust manifold  
Steering









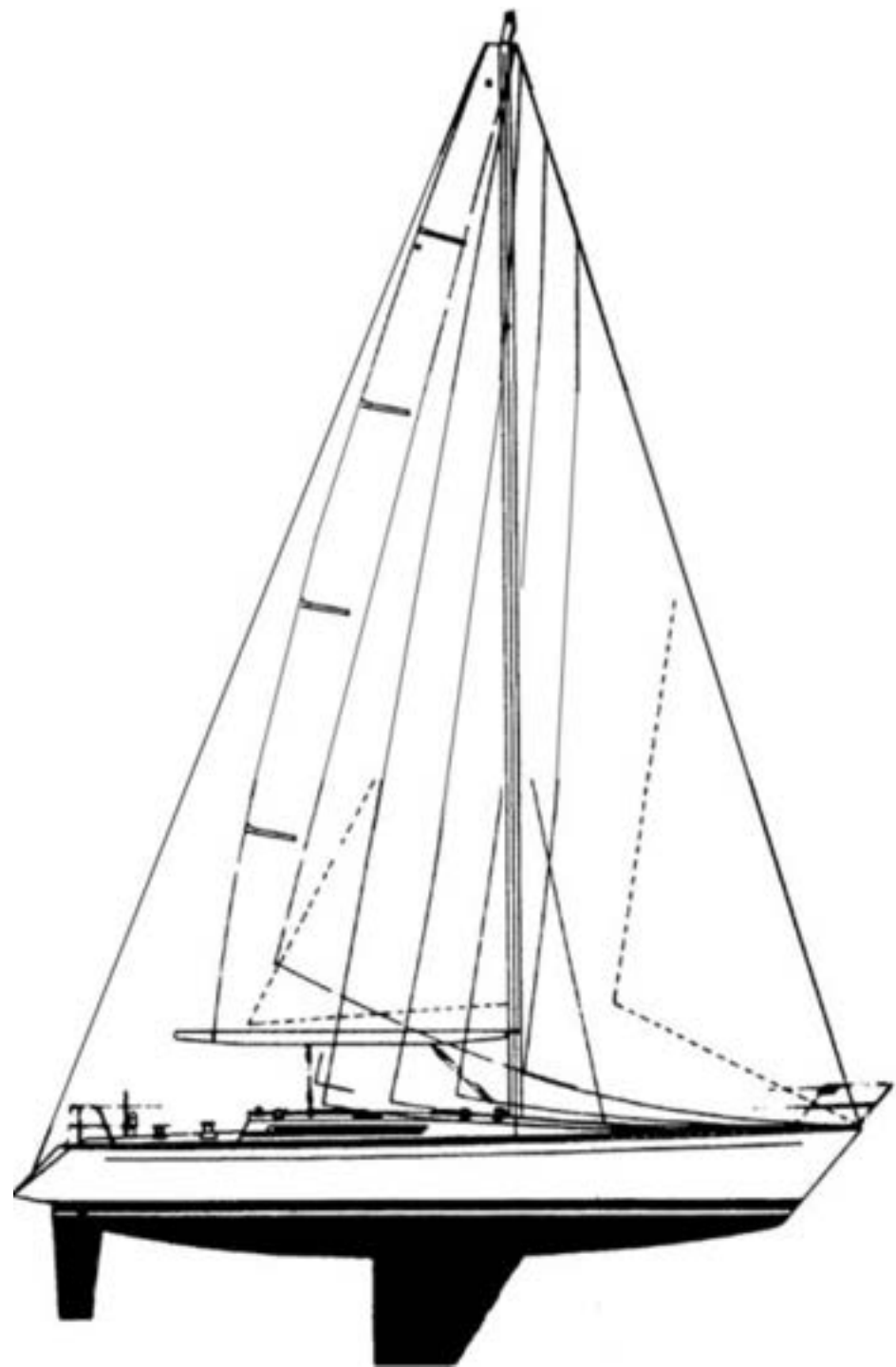
Worries about meeting connecting flight to Port Lincoln until I realised the change in time zone NSW to SA



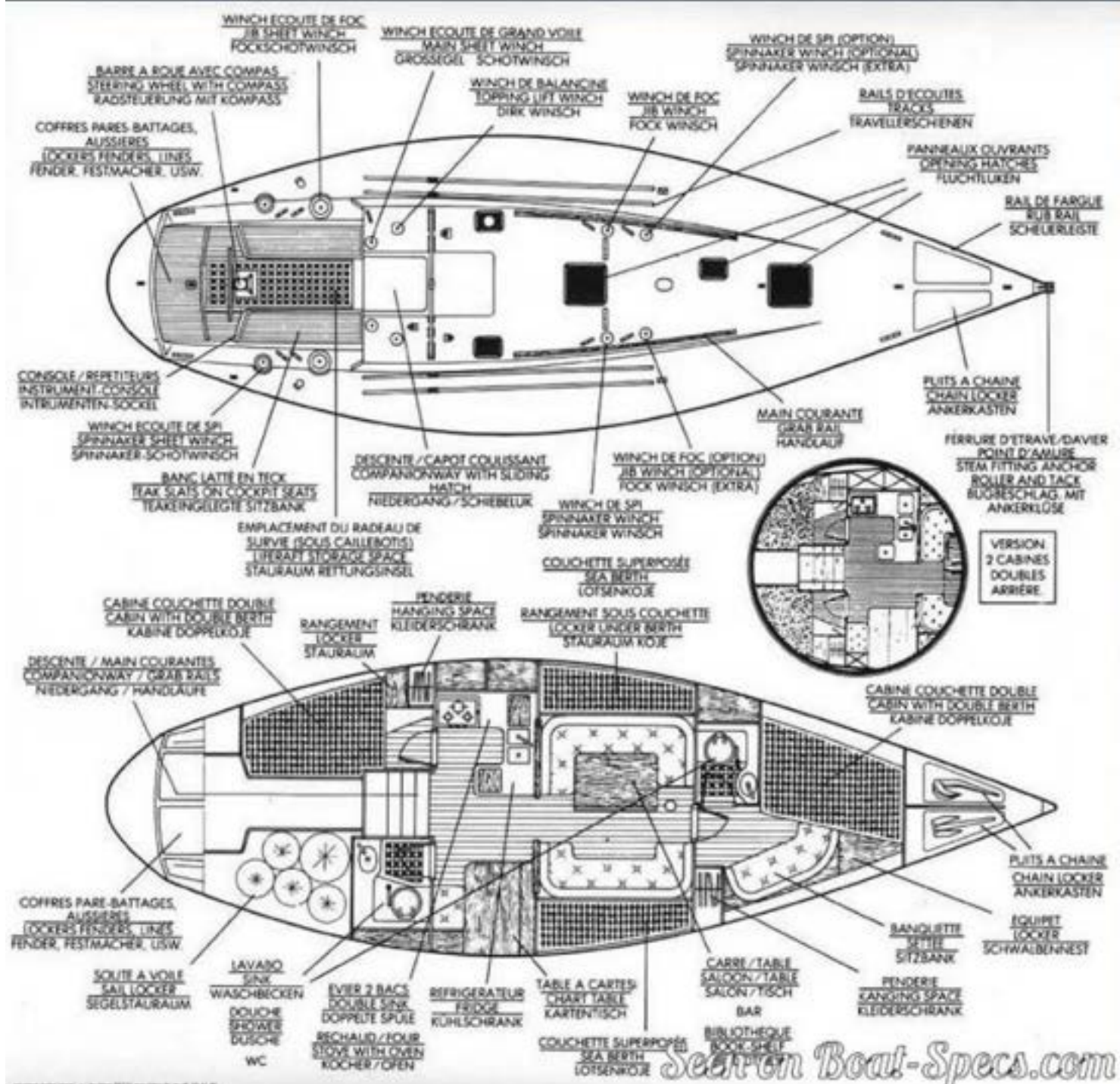














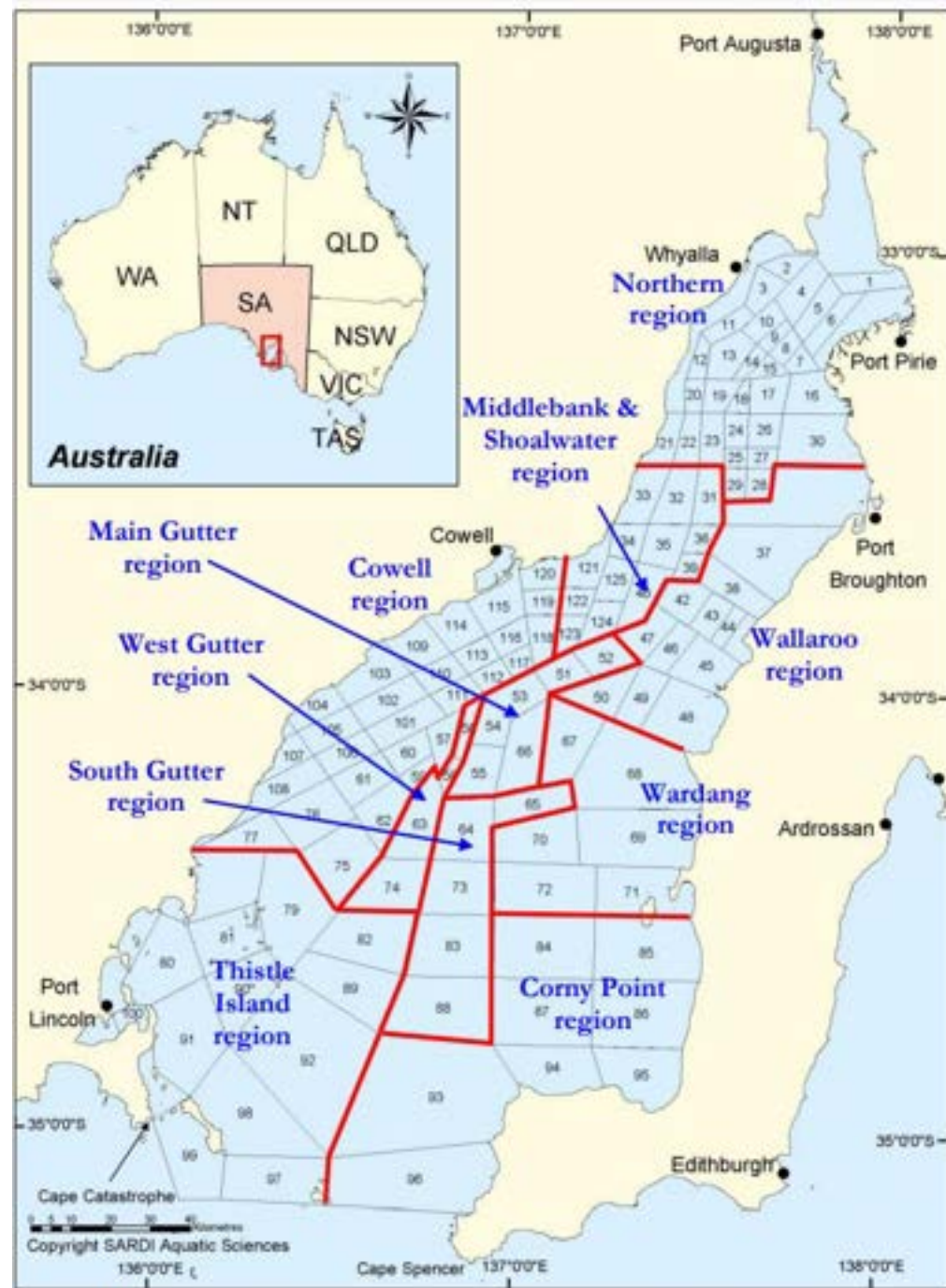
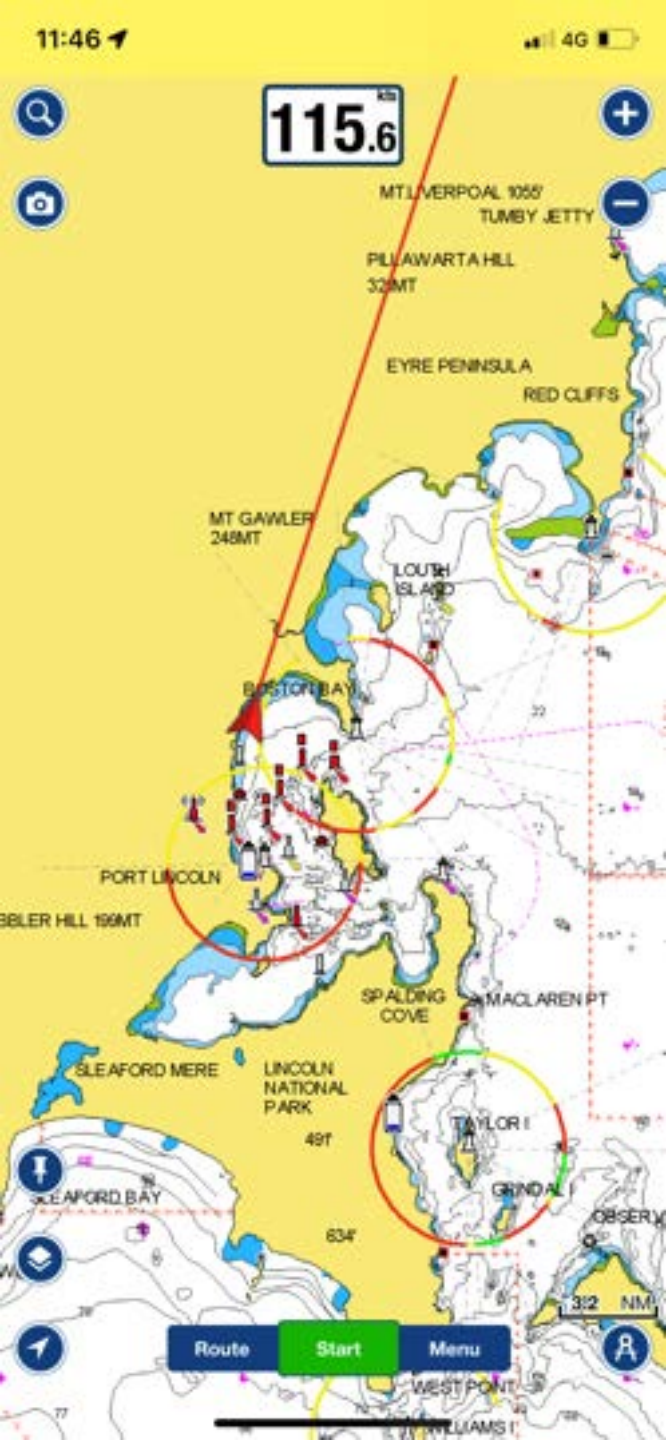


Figure 1.2 Fishing blocks (numbers) and reporting regions of the SGPF.

The Spencer Gulf prawn fishery. NB Cape Catastrophe!

[https://www.pir.sa.gov.au/\\_\\_data/assets/pdf\\_file/0018/232281/SPG\\_Prawn\\_11\\_12\\_Stock\\_Assessment.pdf](https://www.pir.sa.gov.au/__data/assets/pdf_file/0018/232281/SPG_Prawn_11_12_Stock_Assessment.pdf)





My hire car helped with the errands and exploring the local area.







LEVI SMITH  
GENERAL BUILDER

Playground

Mundy's Mooring

The Tacoma  
Preservation Society

Lincoln Lakes  
Development Co

Tuna Boat Wharf

Shark Cage Diving with  
Calypso Star Charters

Port Lincoln Marina

The Anchorage  
Holiday Apartment

Marina

Port Lincoln Leisure  
Centre - YMCA

South Point Beach House

Jubilee Marina  
Apartment

Marina Townhouse  
Port Lincoln

South Point Reserve

Web Management  
Services

Strive Disability  
Support Services

Google







CRUISE  
NO  
KEEP



LT. COL. GAYLER, R.N.  
THEN GOVERNOR OF THE COLONY  
AND IN THE FIRST YEAR OF THE  
GOVERNMENT OF CAPT. G. GILY.  
ADORNED WITH THIS MONUMENT  
TO THE PERPETUAL MEMORY  
OF THE ILLUSTRIOUS NAVIGATOR  
HIS HONORED COMMANDER  
BY  
JOHN FRANKLIN, CAPT. R.N.  
R.C.B. & P.  
L.T. G. VAN

D.L.B. 196  
C.B. 196

















Making all seaworthy over a public holiday

Getting Sea Wolf shipshape (over a holiday w/e)

Putting engine and steering back together

Repairs to:

water tank

mirror

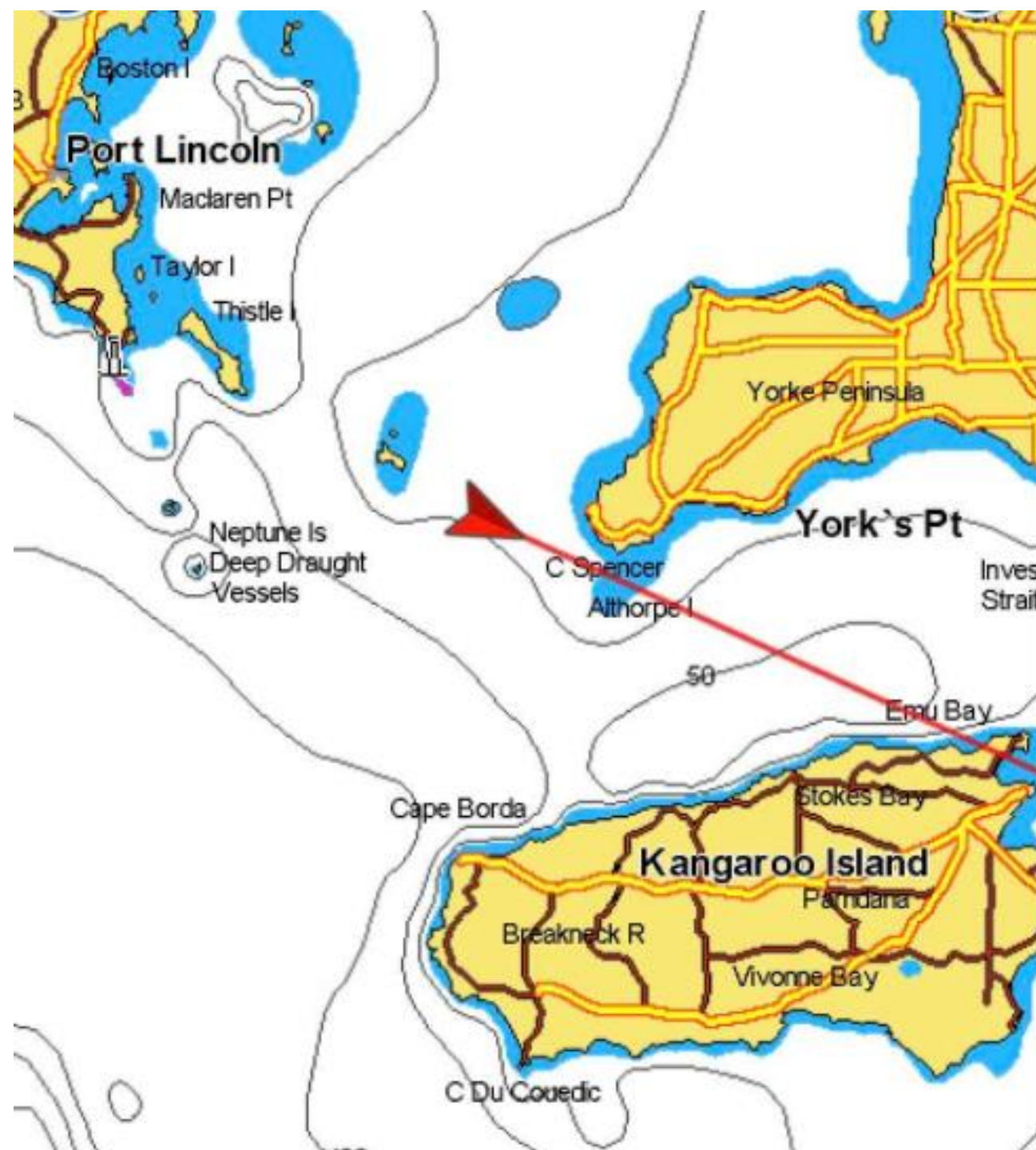
genoa

mains'l slides

provisioning















The only target on AIS  
came straight for us!



AUSTRALIAN BORDER FORCE

BLUE GROPER CLOSURE  
SOUTHERN ROCK LOBSTER (NORTHERN ZONE)

### MILITARY EXERCISE AREA

MILITARY OPERATIONS ARE CONDUCTED WITHIN THE AREA OF THIS CHART. FOR AREA LIMITS AND DETAILS SEE SEAFARERS HANDBOOK FOR AUSTRALIAN WATERS AHP 20.

AMERICAN RIVER

American River is not American and does not have a river, but the VMR operator was very welcoming



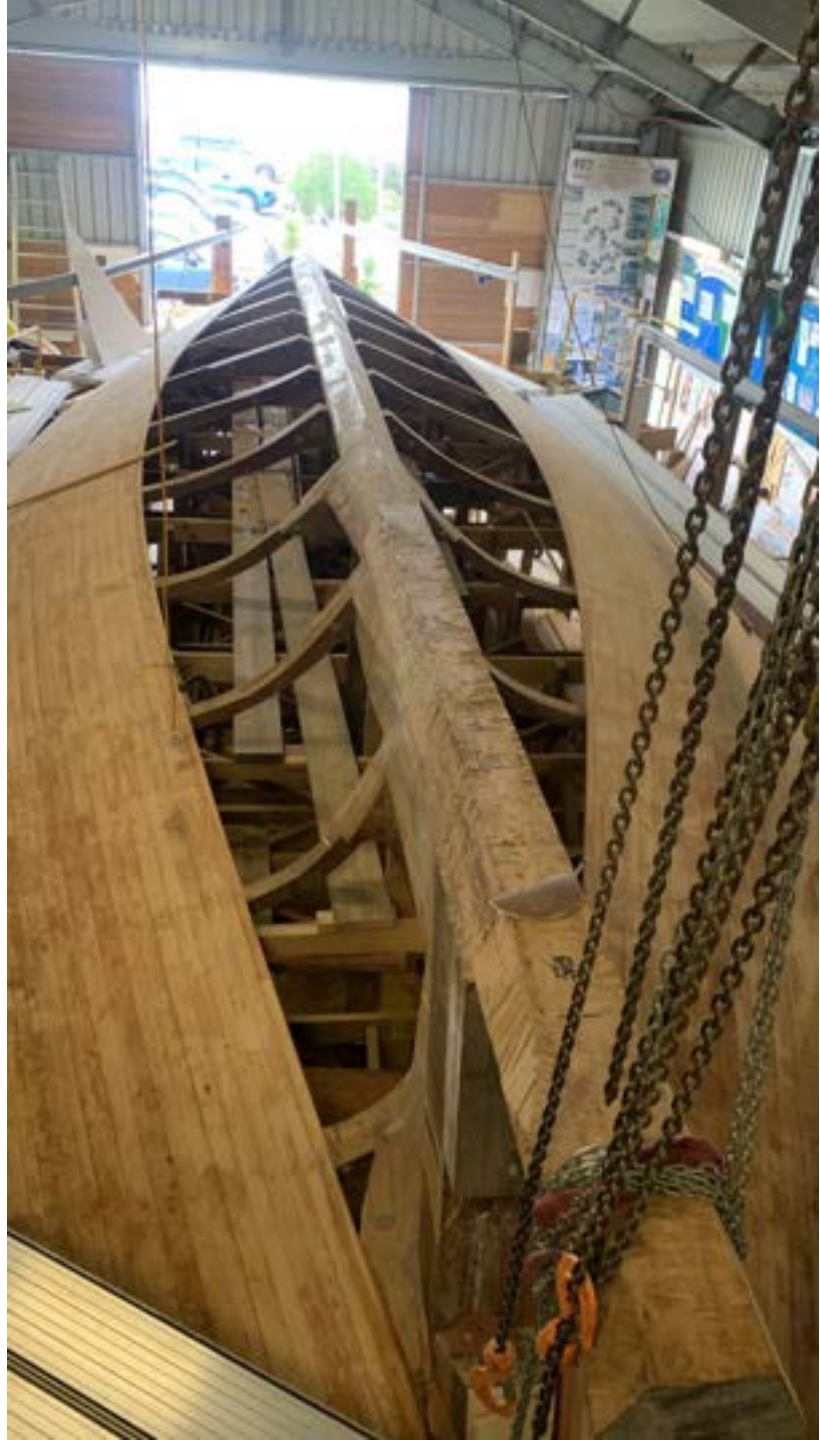
Route Start Menu

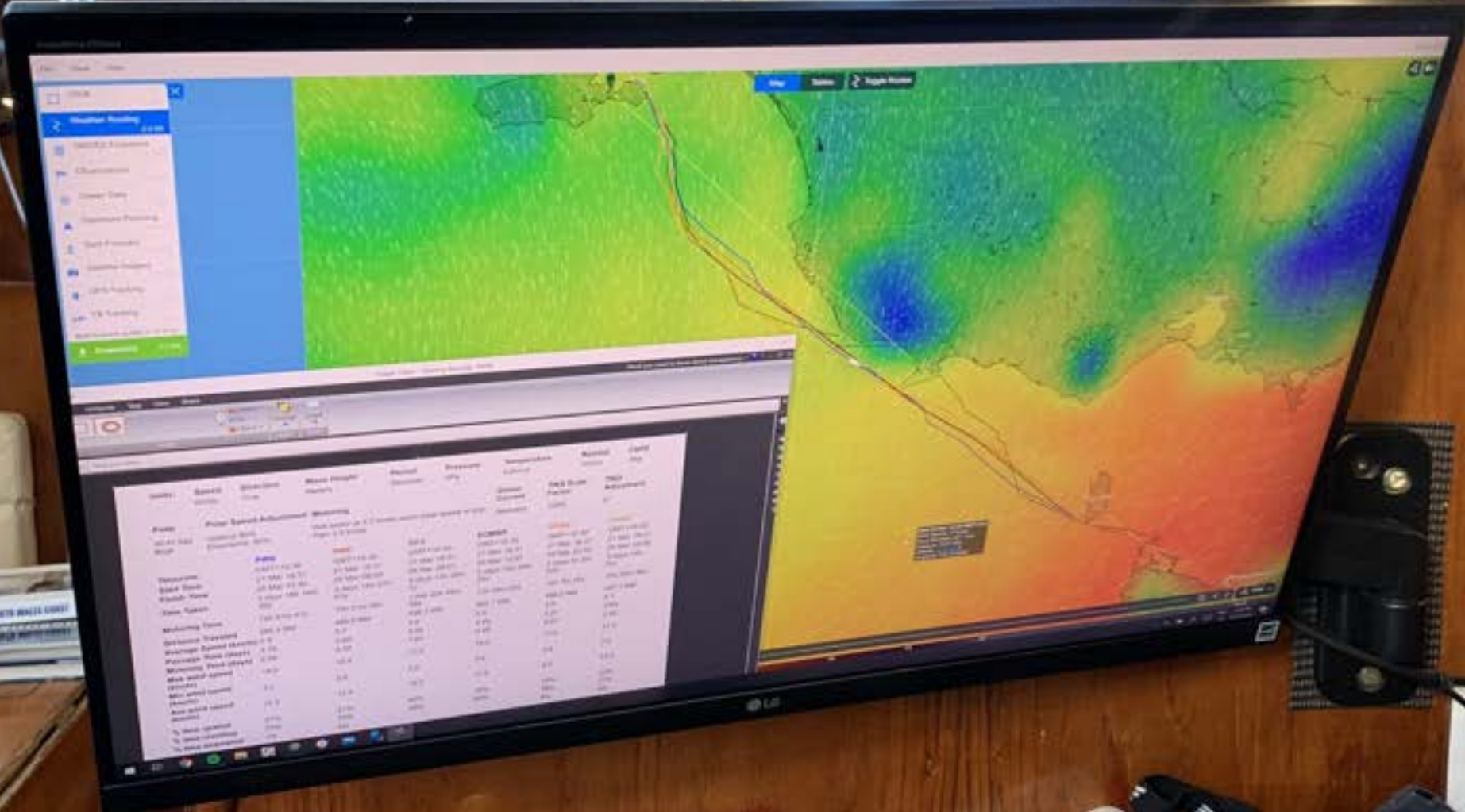
0.7 NM











CRUISE THE NEW SOUTH WALES COAST  
NEW SOUTH WALES COAST

SAB  
WA R  
MMSI



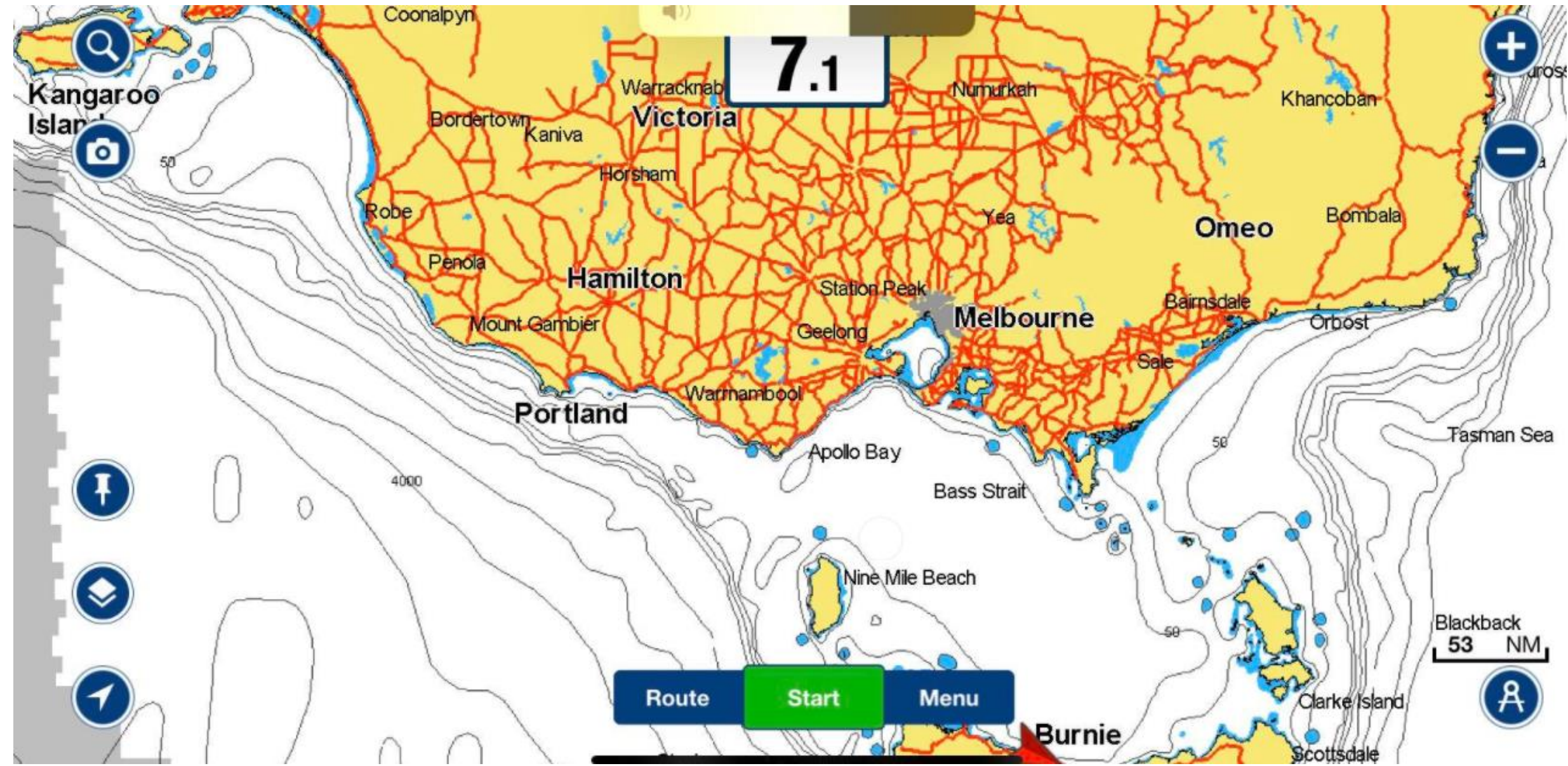














City Of Melbourne B

50

20

10

50

100

Bass Strait

10

Clarke Island

Little Musselroe Bay

Great Musselroe Bay

Maxies Pt

West Pt

Wynyard

W Sandy Pt

Stumpys B

Purdon Bay

Burnie

Devonport

George Town

Scottsdale

Ulverstone

Shearwater

Branhorn

Bay Of Fires

Sheffield

Exeter

George R

Waratah

Donaldson River

St Helens

Scamander

Launceston

Westbury

Carrick

Evandale

Ben Lomond

Ironhouse Pt

St Marys

13 NM

Route

Start

Menu











9:13 PM



585

nm

99:47

hcm



GARMIN



2:47

4G







60437

HONDA  
8

K39















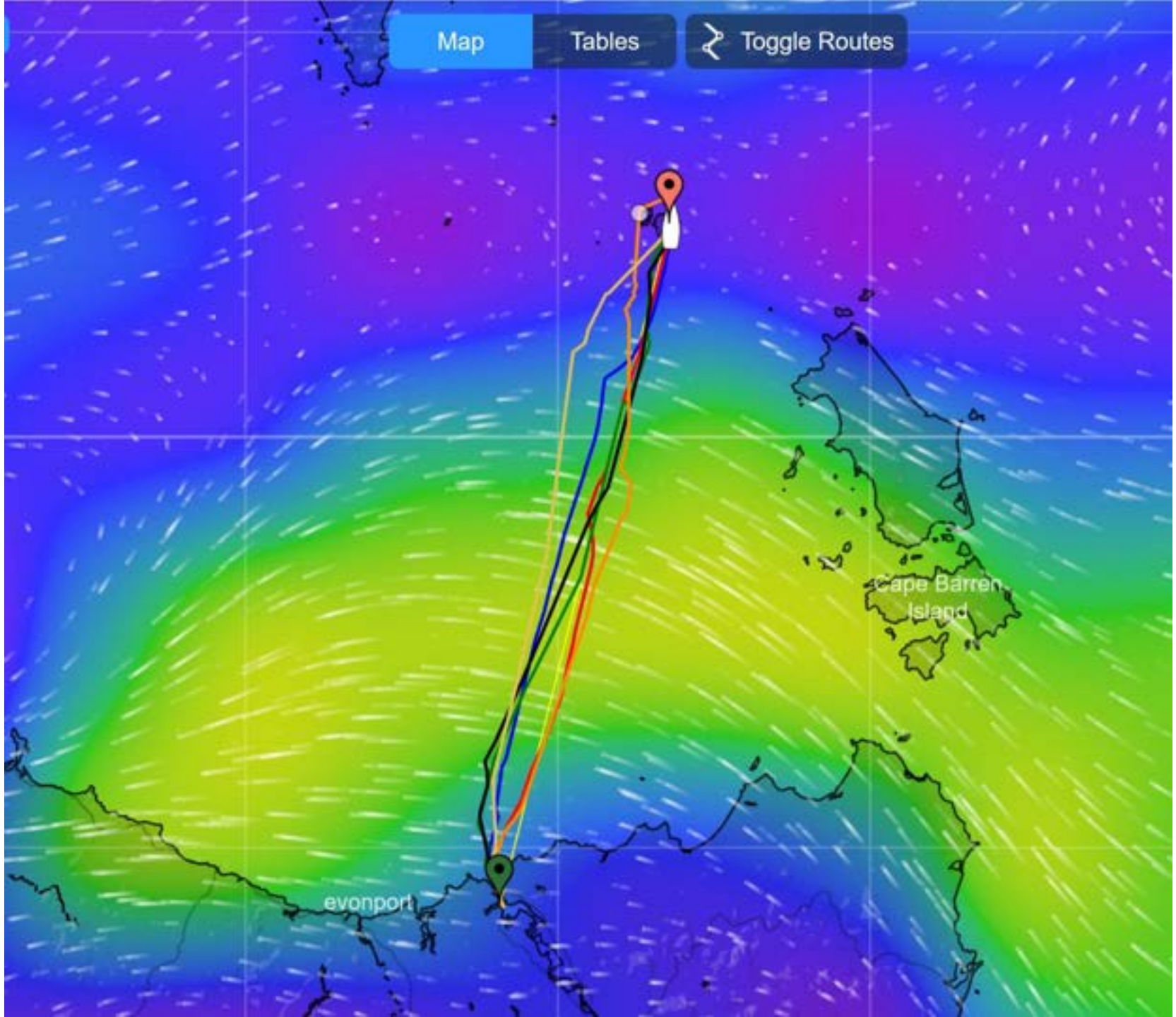


	<b>PWG</b>	<b>None</b>	<b>None</b>	<b>None</b>	<b>SPIRE</b>	<b>None</b>
<b>Timezone</b>	GMT+11:00	GMT+11:00	GMT+11:00	GMT+11:00	GMT+11:00	GMT+11:00
<b>Start Time</b>	28 Mar 10:39	28 Mar 10:39	28 Mar 10:39	28 Mar 10:39	28 Mar 10:39	28 Mar 10:39
<b>Finish Time</b>	29 Mar 07:34	29 Mar 07:18	29 Mar 08:10	29 Mar 09:11	29 Mar 12:23	29 Mar 09:27
<b>Time Taken</b>	20h 55m 6s	20h 39m 49s	21h 31m 37s	22h 32m 2s	1 day 1h 44m 30s	22h 48m 41s
<b>Motoring Time</b>	2h 16m 48s	3h 31m 17s	8h 10m 14s	7h 10m 51s	8h 0m 15s	6h 49m 36s
<b>Distance Traveled</b>	106.6 NM	105.8 NM	108.0 NM	107.1 NM	117.0 NM	108.7 NM
<b>Average Speed (knots)</b>	5.1	5.1	5.0	4.8	4.5	4.8
<b>Passage Time (days)</b>	0.87	0.86	0.90	0.94	1.07	0.95
<b>Motoring Time (days)</b>	0.10	0.15	0.34	0.30	0.33	0.28
<b>Max wind speed (knots)</b>	11.8	12.9	13.0	9.1	9.2	9.9
<b>Min wind speed (knots)</b>	2.3	1.2	2.3	1.5	1.6	2.5
<b>Ave wind speed (knots)</b>	8.6	7.6	7.0	6.3	5.7	6.1
<b>% time upwind</b>	11%	17%	4%	22%	18%	14%
<b>% time reaching</b>	72%	79%	76%	77%	75%	75%
<b>% time downwind</b>	16%	4%	21%	1%	7%	11%
<b>% time &lt; 8 knots</b>	29%	47%	56%	68%	74%	58%
<b>% time 8 - 20 knots</b>	71%	53%	44%	32%	26%	42%
<b>% time 20 - 30 knots</b>						
<b>% time 30 - 40 knots</b>						
<b>% time &gt; 40 knots</b>						
<b>% time &lt; 1m wave</b>	94%	90%	98%	99%	99%	99%
<b>% time 1 - 2m wave</b>	6%	10%				
<b>% time 2 - 3m wave</b>						
<b>% time 3 - 4m wave</b>						

Map

Tables

Toggle Routes













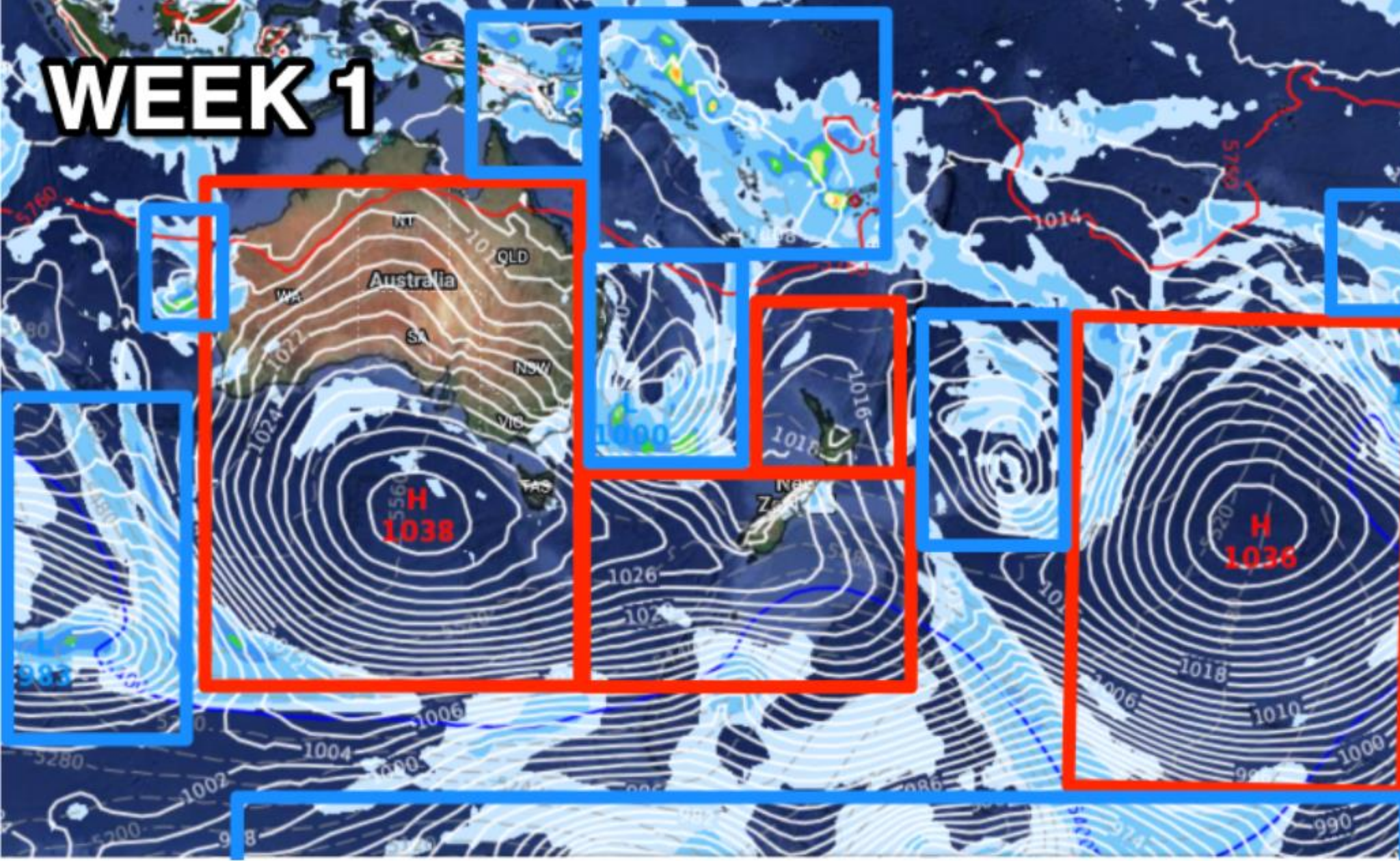


Route **Start** Menu

15 NM



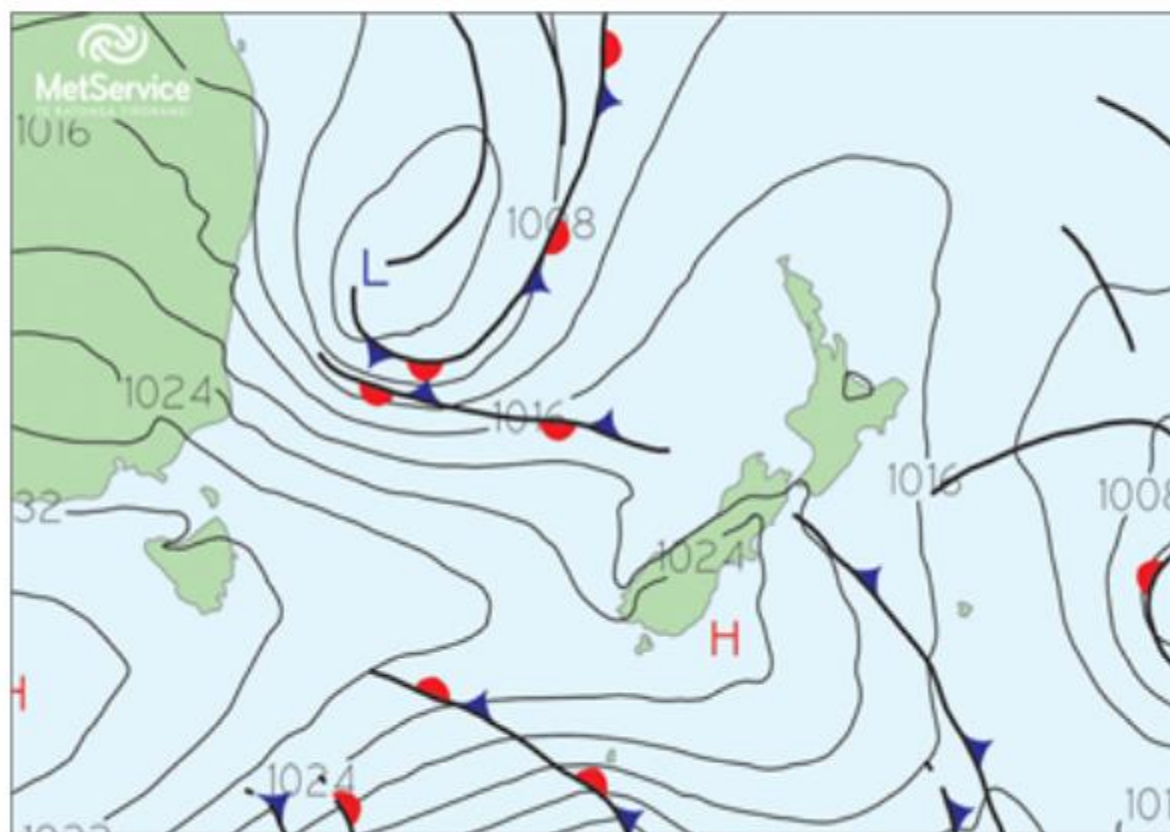
# WEEK 1



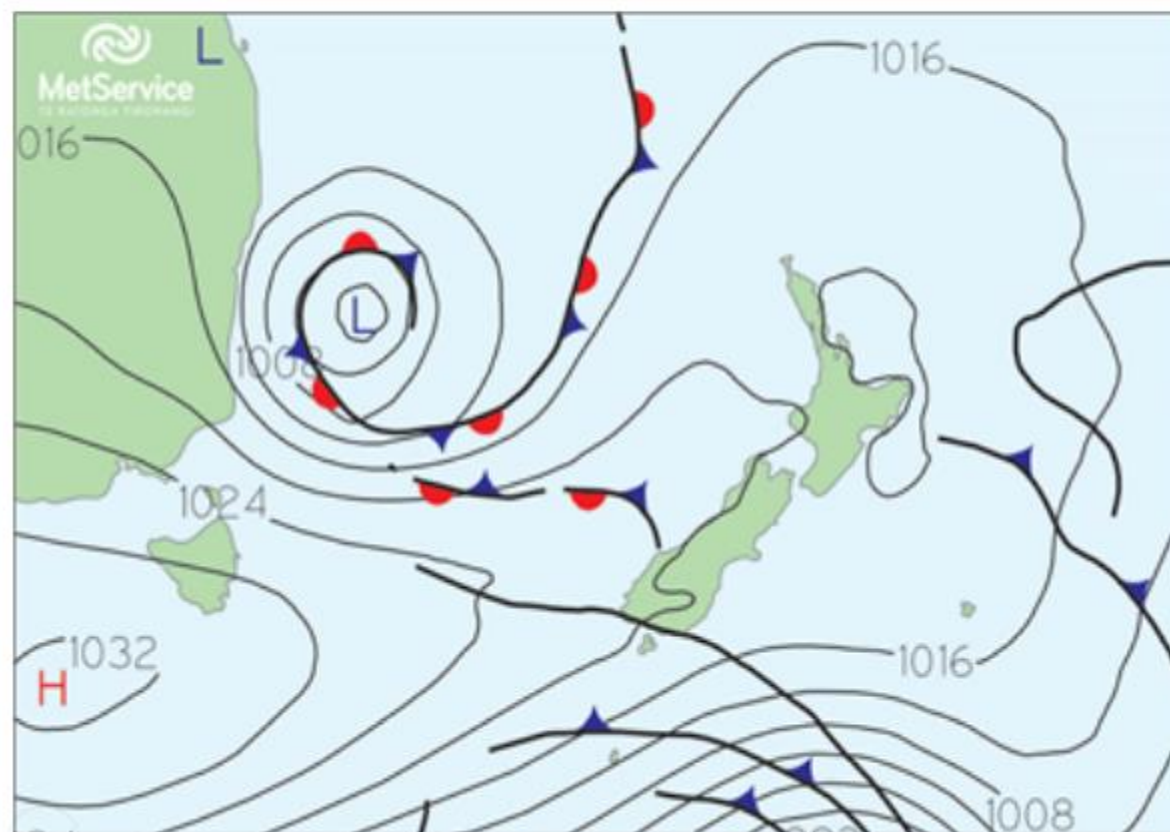
*Week 1 kicks off similar to much of March with high pressure to our west, low pressure to Australia's east and a light southerly flow in the NZ area.*

<https://www.weatherwatch.co.nz/content/climatewatch-april-outlook-as-la-nina-continues-to-fade-highs-continue-to-dominate-14-maps-video>

## Daily Analysis for April 2022 valid at 0000UTC

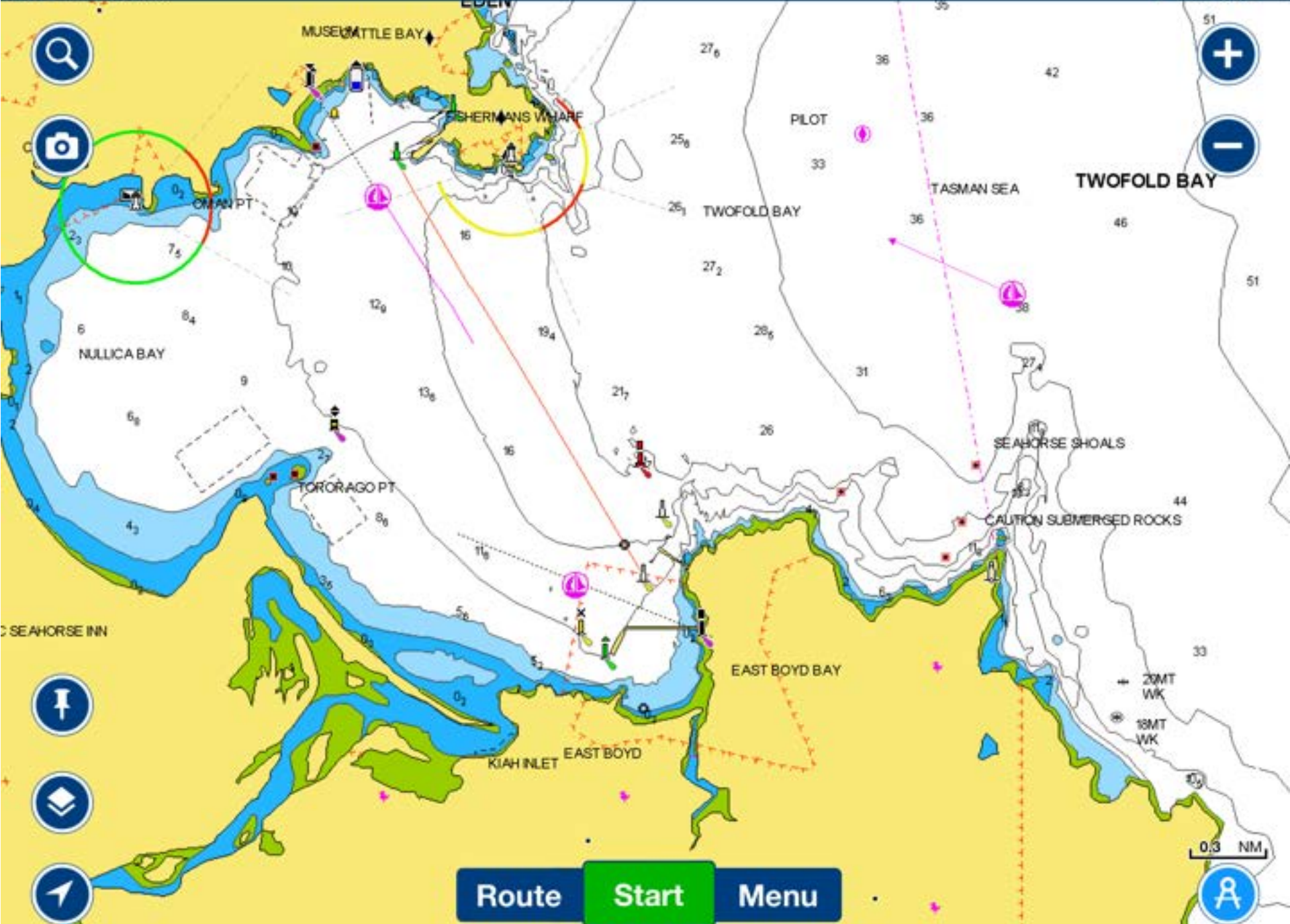


Valid at 1pm NZ Daylight Time: Friday, 1 April, 2022



Valid at 1pm NZ Daylight Time: Saturday, 2 April, 2022



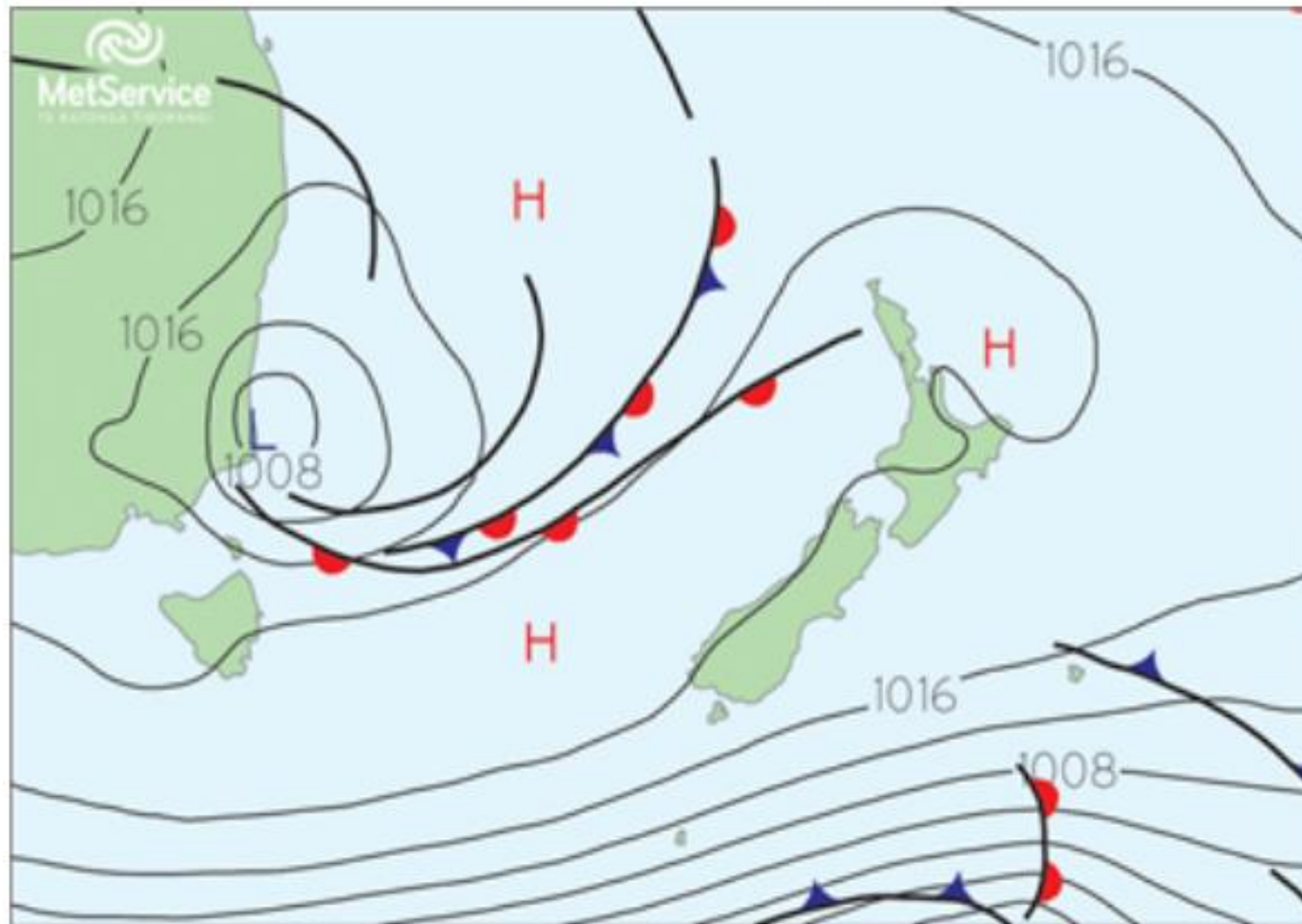


Route Start Menu

0.3 NM

	<b>PWG</b>	<b>PWE</b>	<b>GFS</b>	<b>ECMWF</b>	<b>SPIRE</b>	<b>UKMO</b>
<b>Timezone</b>	GMT+11:00	GMT+11:00	GMT+11:00	GMT+11:00	GMT+11:00	GMT+11:00
<b>Start Time</b>	3 Apr 08:00	3 Apr 08:00	3 Apr 08:00	3 Apr 08:00	3 Apr 08:00	3 Apr 08:00
<b>Finish Time</b>	4 Apr 23:08	4 Apr 19:49	5 Apr 00:45	4 Apr 23:58	4 Apr 23:50	5 Apr 02:58
<b>Time Taken</b>	1 day 15h 8m 28s	1 day 11h 49m 2s	1 day 16h 45m 18s	1 day 15h 58m 32s	1 day 15h 50m 13s	1 day 18h 58m 43s
<b>Motoring Time</b>	49m 31s	0h	6h 44m 25s	7h 54m 51s	9h 37m 11s	4h 38m 49s
<b>Distance Traveled</b>	224.7 NM	212.4 NM	215.1 NM	220.4 NM	218.3 NM	217.4 NM
<b>Average Speed (knots)</b>	5.7	5.9	5.3	5.5	5.5	5.1
<b>Passage Time (days)</b>	1.63	1.49	1.70	1.67	1.66	1.79
<b>Motoring Time (days)</b>	0.03	0.00	0.28	0.33	0.40	0.19
<b>Max wind speed (knots)</b>	30.0	31.5	20.5	21.5	20.6	21.2
<b>Min wind speed (knots)</b>	0.8	4.9	2.6	5.7	4.2	2.3
<b>Ave wind speed (knots)</b>	17.6	17.4	13.2	14.8	13.6	13.5
<b>% time upwind</b>	4%		12%	20%	26%	12%
<b>% time reaching</b>	88%	99%	88%	80%	64%	78%
<b>% time downwind</b>	7%	1%			10%	11%
<b>% time &lt; 8 knots</b>	19%	7%	30%	17%	17%	24%
<b>% time 8 - 20 knots</b>	35%	67%	63%	64%	78%	60%
<b>% time 20 - 30 knots</b>	44%	20%	7%	19%	4%	17%
<b>% time 30 - 40 knots</b>	2%	7%				
<b>% time &gt; 40 knots</b>						
<b>% time &lt; 1m wave</b>	24%	23%	16%	12%	9%	19%
<b>% time 1 - 2m wave</b>	39%	37%	43%	46%	54%	46%
<b>% time 2 - 3m wave</b>	21%	20%	22%	23%	20%	13%
<b>% time 3 - 4m wave</b>	16%	19%	18%	19%	17%	22%





Valid at 1pm NZ Daylight Time: Sunday, 3 April, 2022

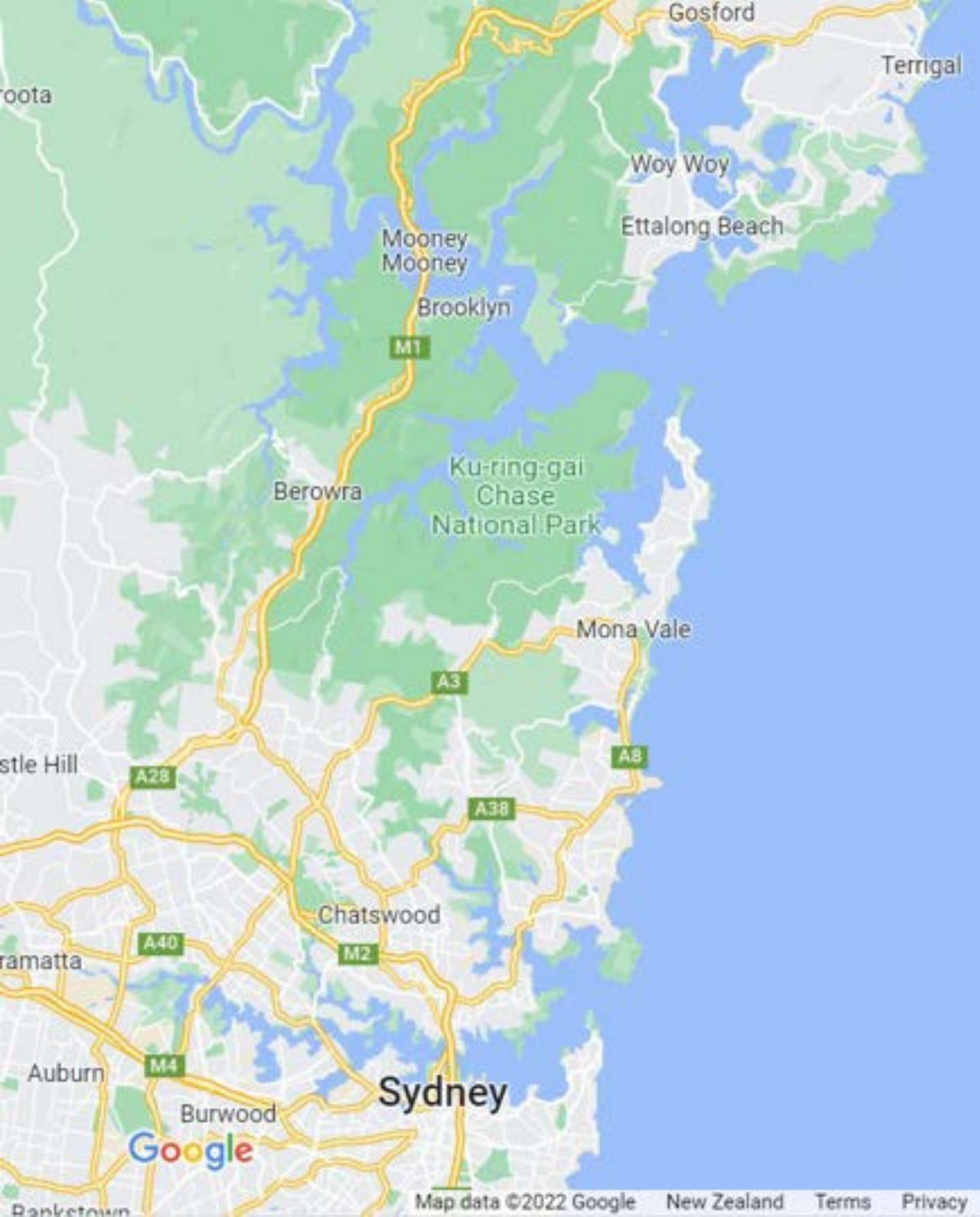




















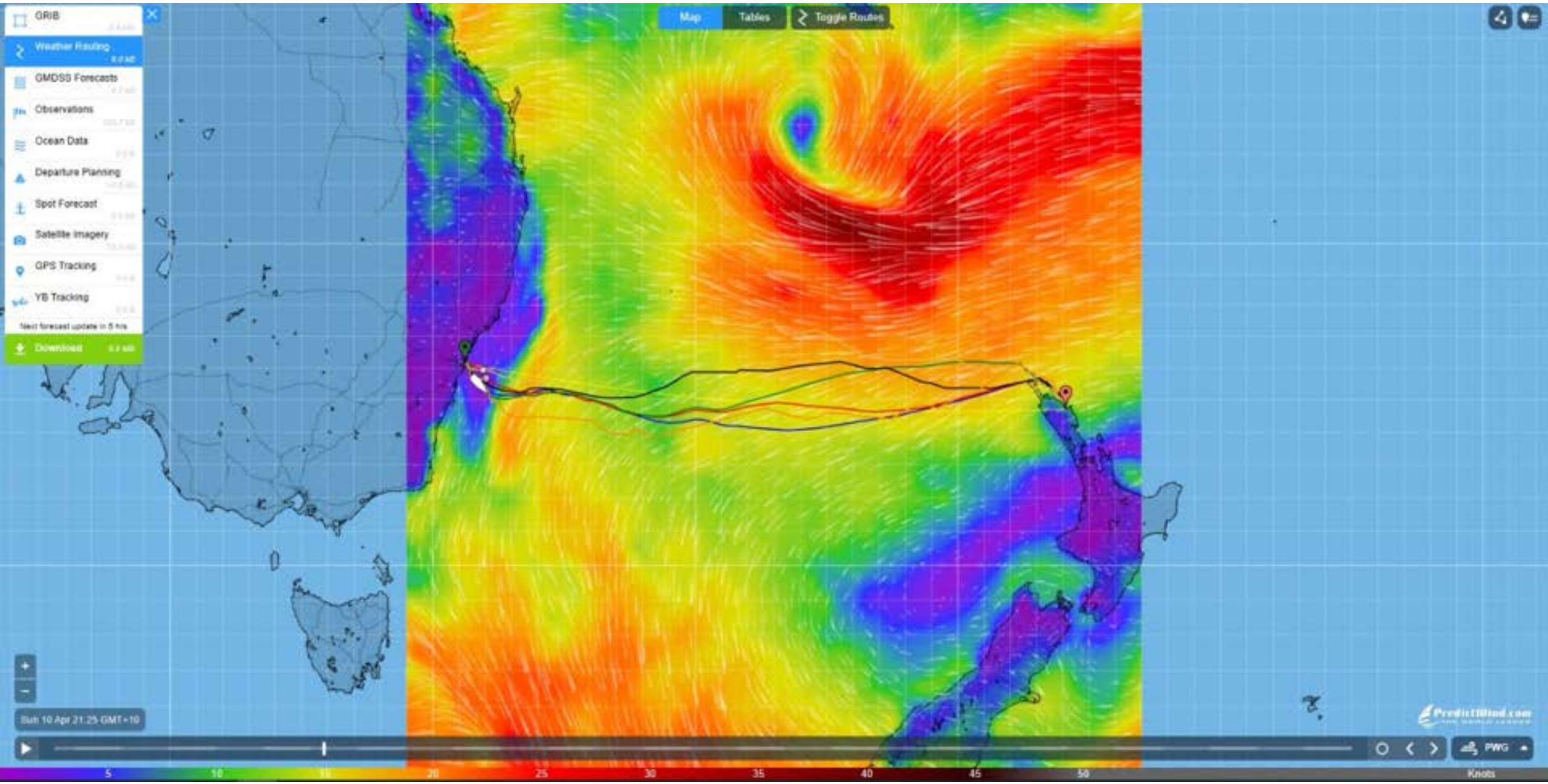


- So much rain!



The Russians and the West.  
The gulf between us!





- GRIB 0.0.0.0
- Weather Routing 0.0.0.0
- GMDSS Forecasts 0.0.0.0
- Observations 000.0.0.0
- Ocean Data 0.0.0.0
- Departure Planning 00.0.0.0
- Spot Forecast 0.0.0.0
- Satellite Imagery 00.0.0.0
- GPS Tracking 0.0.0.0
- YB Tracking 0.0.0.0
- Next forecast update in 5 hrs
- Download 0.0.0.0

Map Tables Toggle Routes

Sun 10 Apr 21:25 GMT+10

PredictWind.com

PWG

Knots

5 10 15 20 25 30 35 40 45 50

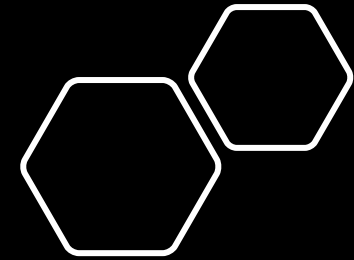






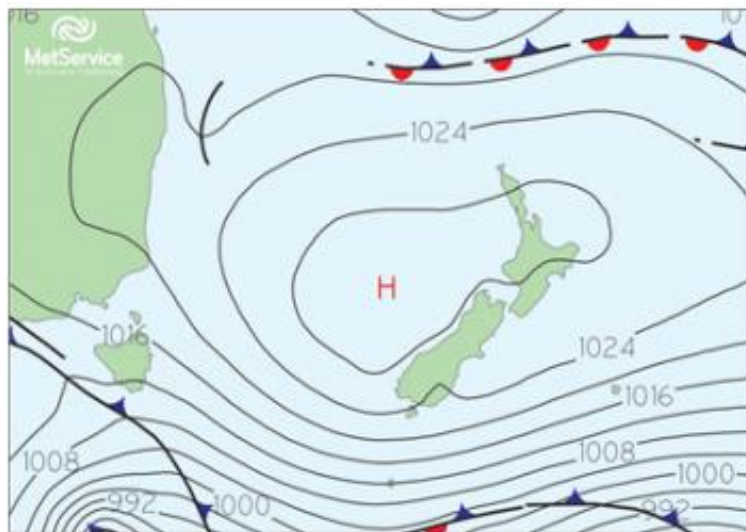




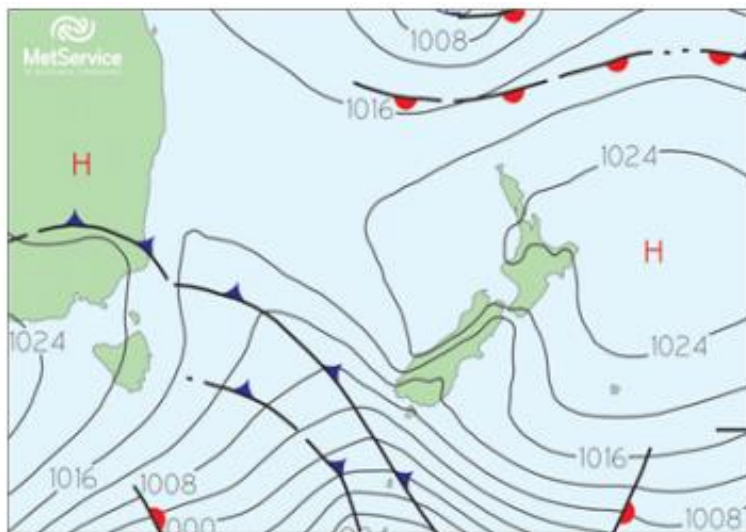


- Watchkeeping
- Steering
- Off-watch duties / activities

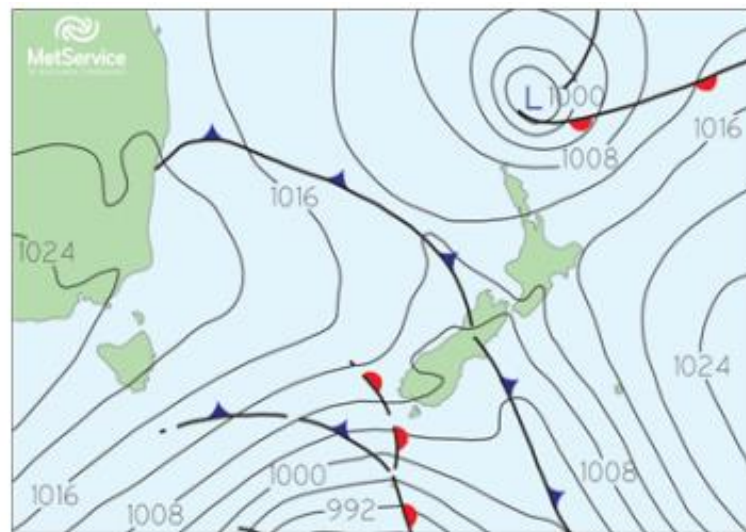




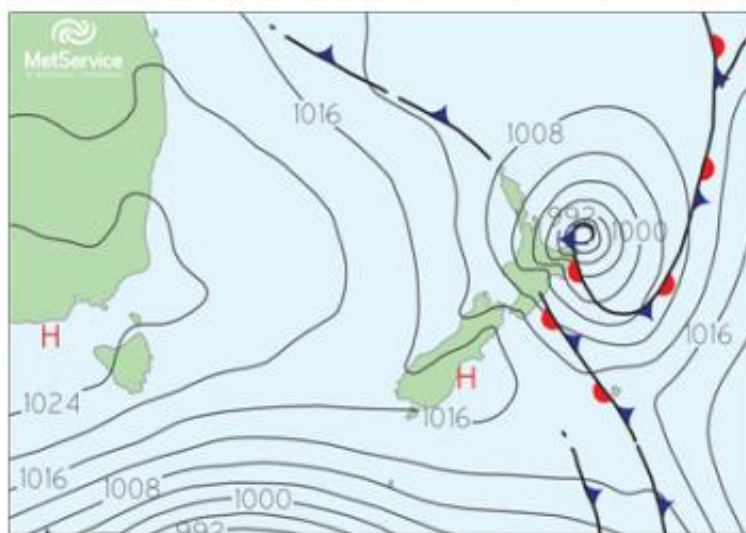
Valid at 1pm NZ Daylight Time: Sunday, 10 April, 2022



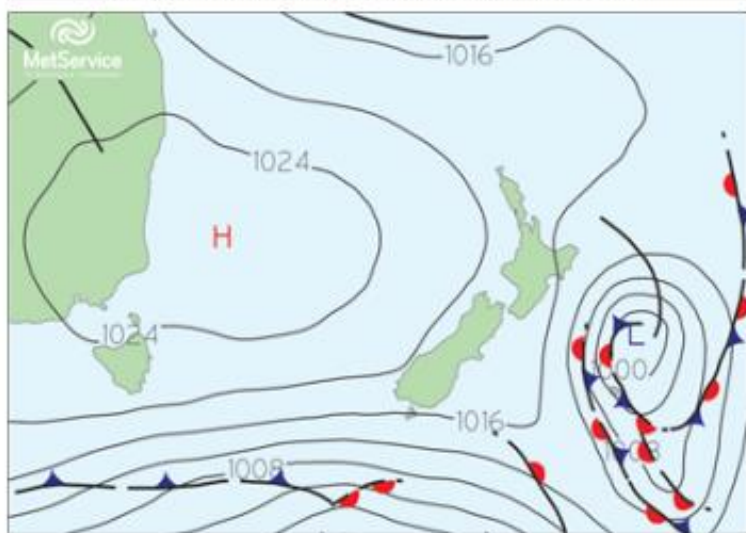
Valid at 1pm NZ Daylight Time: Monday, 11 April, 2022



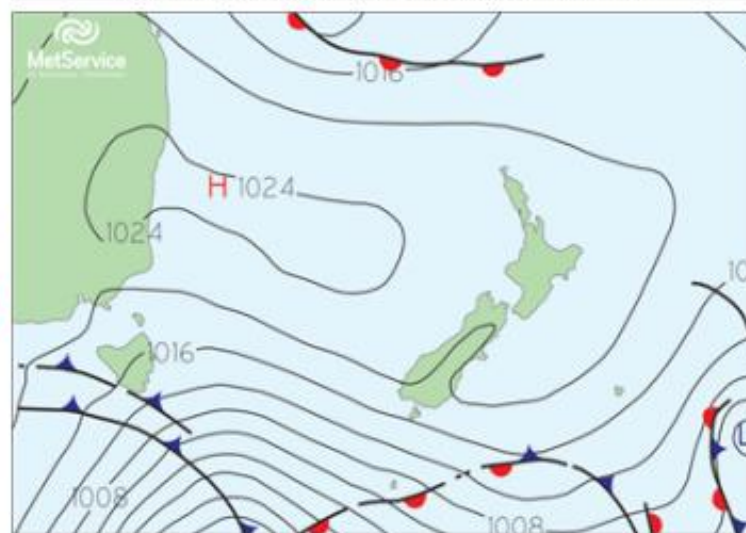
Valid at 1pm NZ Daylight Time: Tuesday, 12 April, 2022



Valid at 1pm NZ Daylight Time: Wednesday, 13 April, 2022

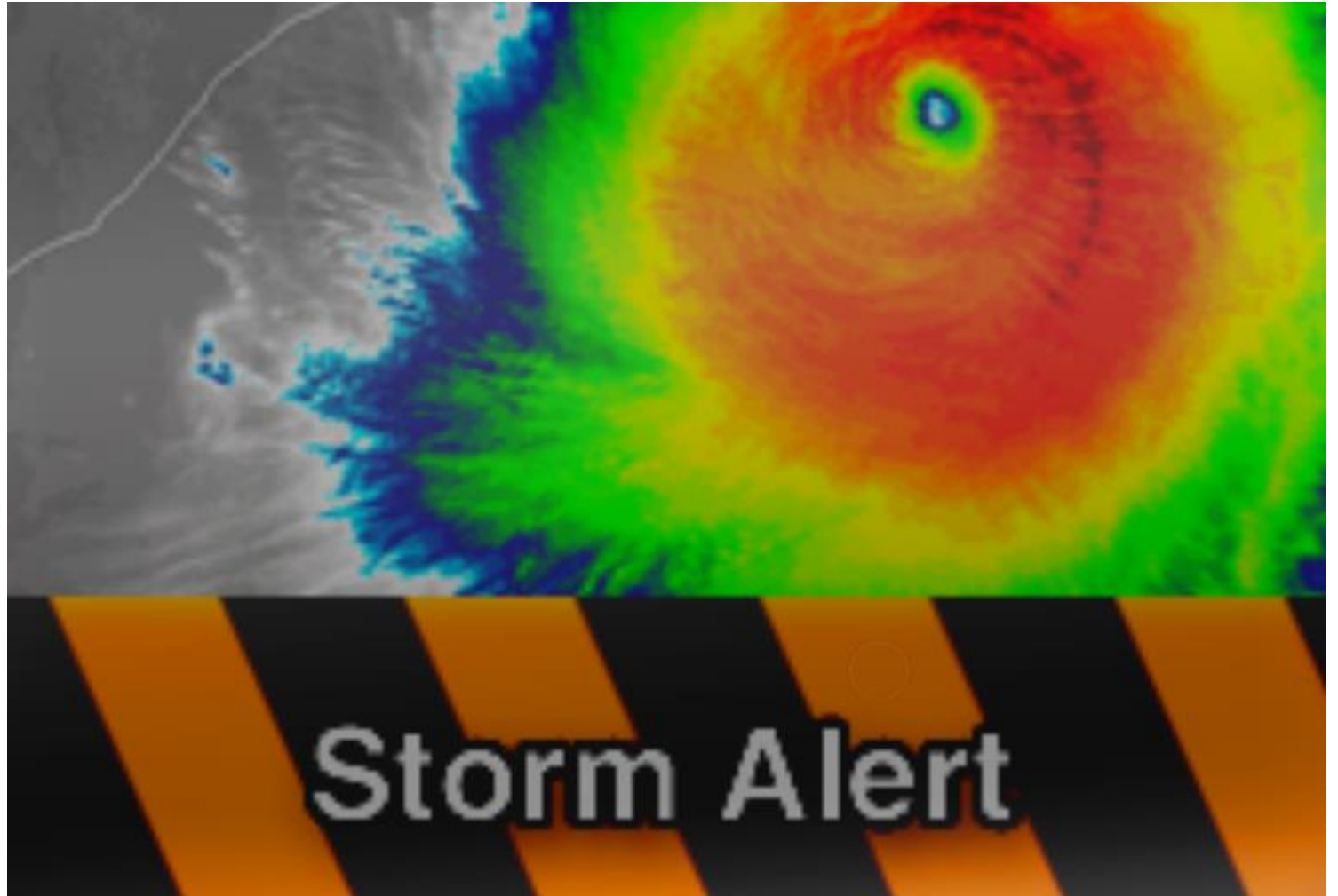


Valid at 1pm NZ Daylight Time: Thursday, 14 April, 2022



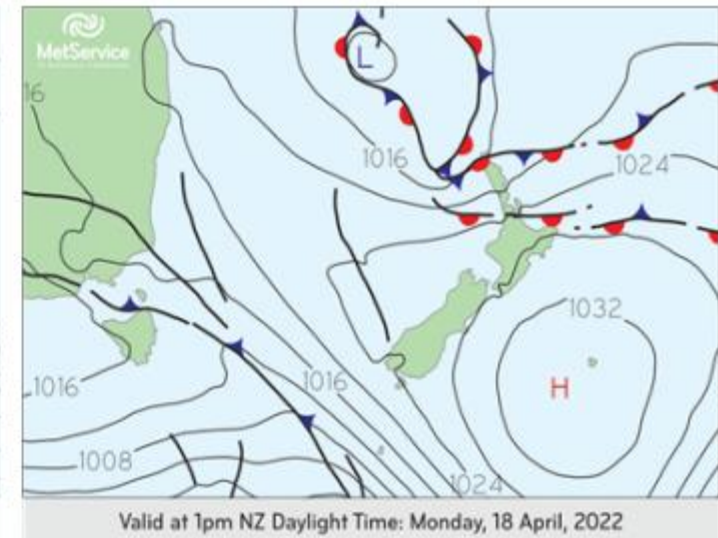
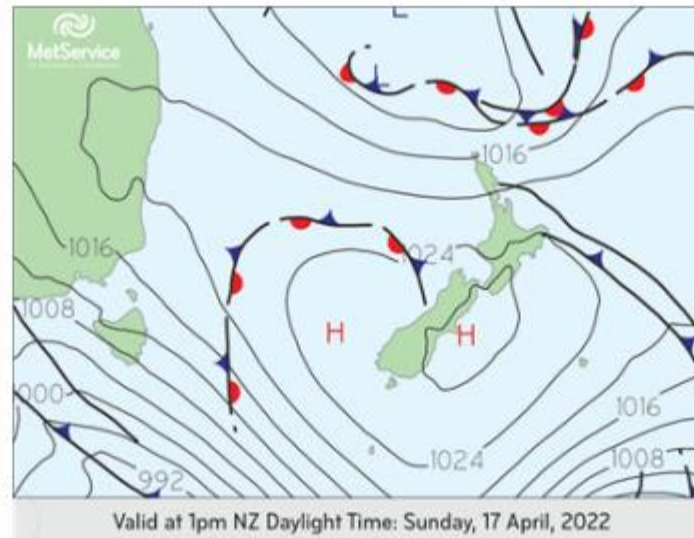
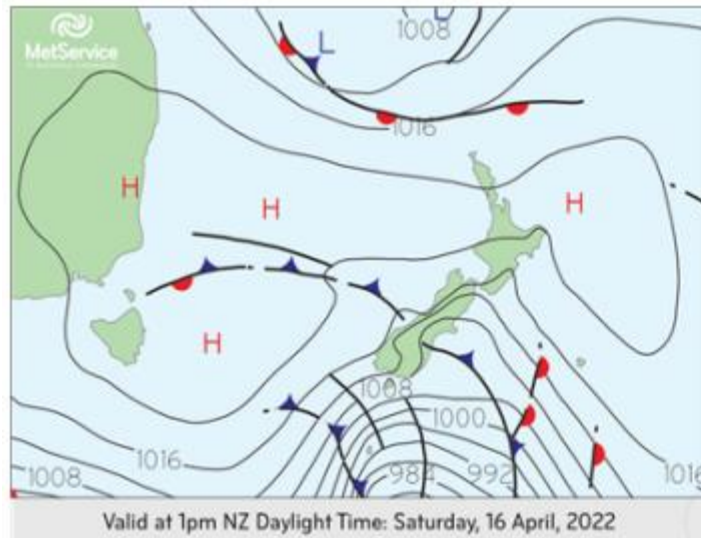
Valid at 1pm NZ Daylight Time: Friday, 15 April, 2022

On day three of the crossing  
PredictWind Offshore was forecasting  
conditions becoming unfavourable,  
especially as we closed the NZ coast. I  
didn't an image 😞



These slides show what occurred and what we were avoiding!

We decided to head 120nm downwind to Lord Howe!



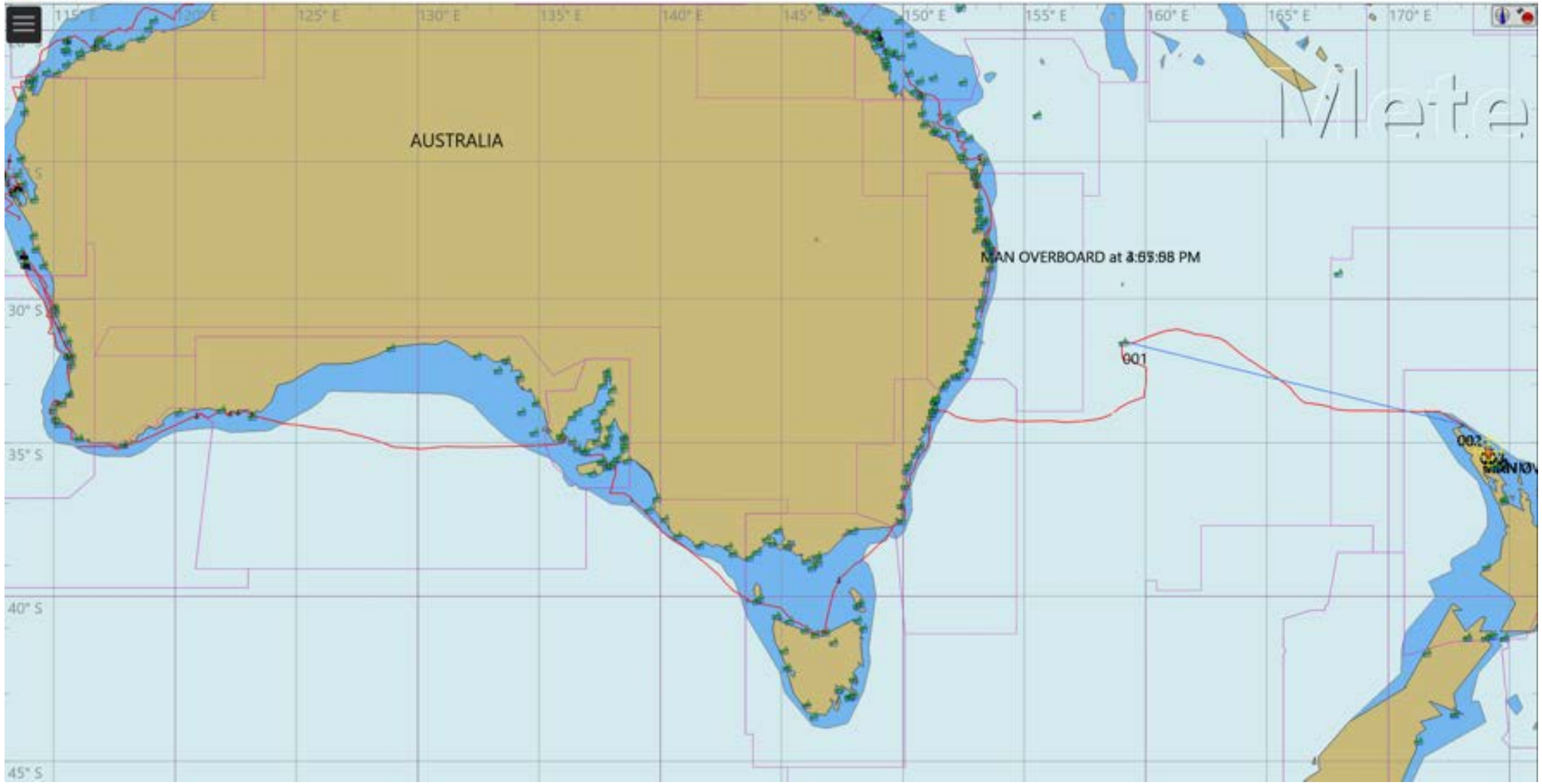


Luckily I had downloaded the area on my phone's Navionics and we had the NSW cruising guide to help us.

Route Start Menu

329 NM





AUSTRALIA

MAN OVERBOARD at 3:55:58 PM

001

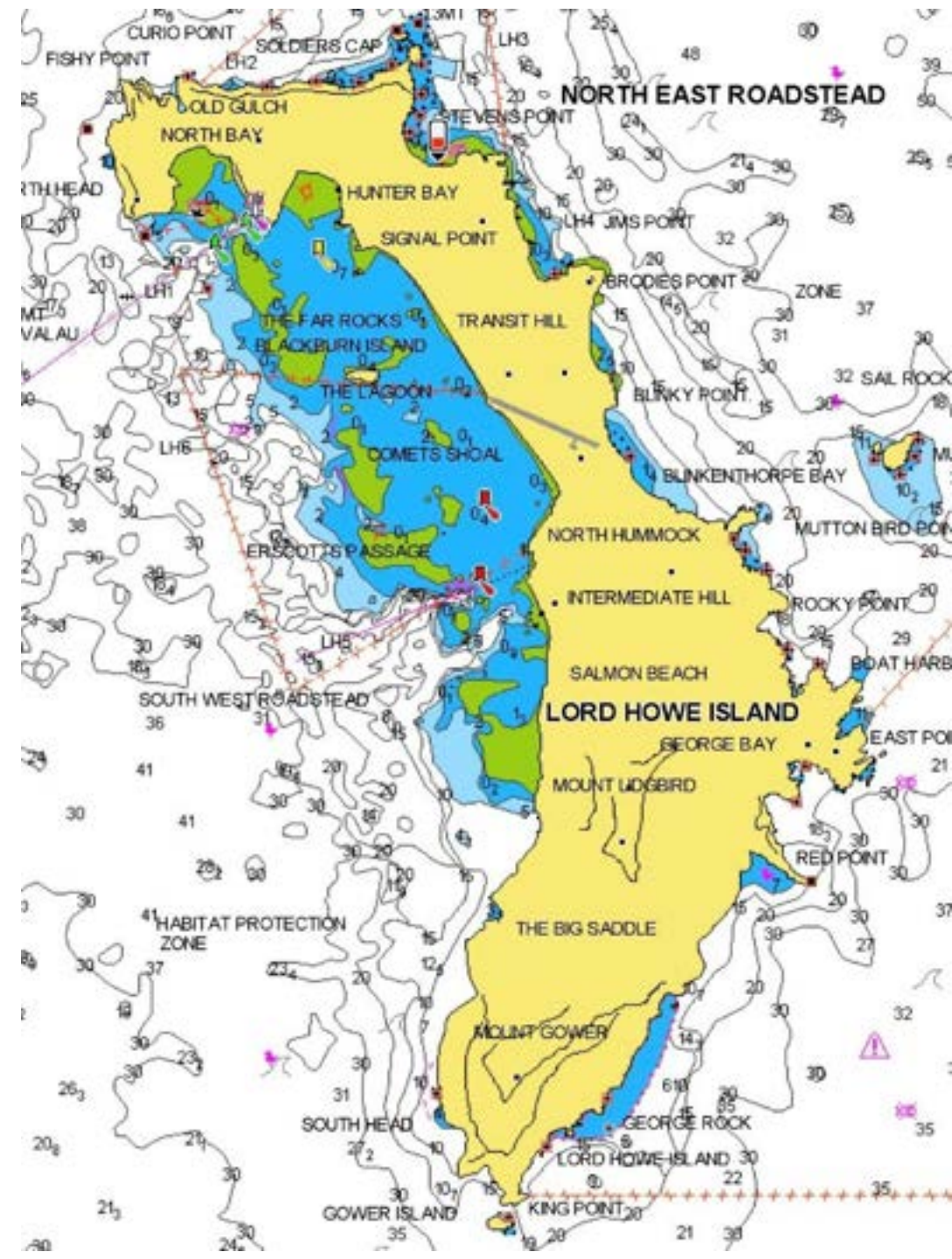
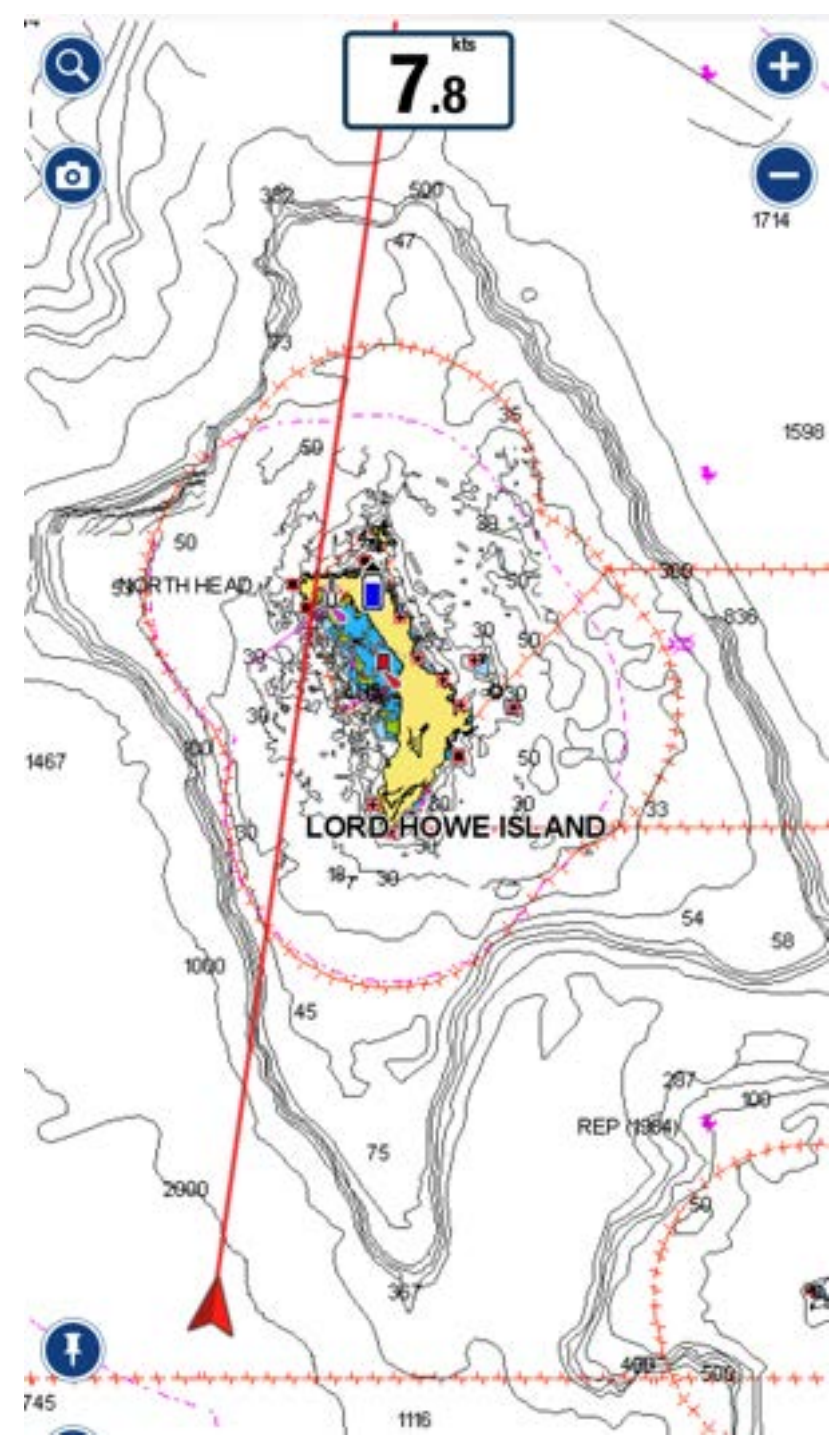
002

Wlato



[https://en.wikipedia.org/wiki/Ball%27s\\_Pyramid#/media/File:Balls\\_Pyramid\\_near\\_Lord\\_Howe\\_Island.jpg](https://en.wikipedia.org/wiki/Ball%27s_Pyramid#/media/File:Balls_Pyramid_near_Lord_Howe_Island.jpg)









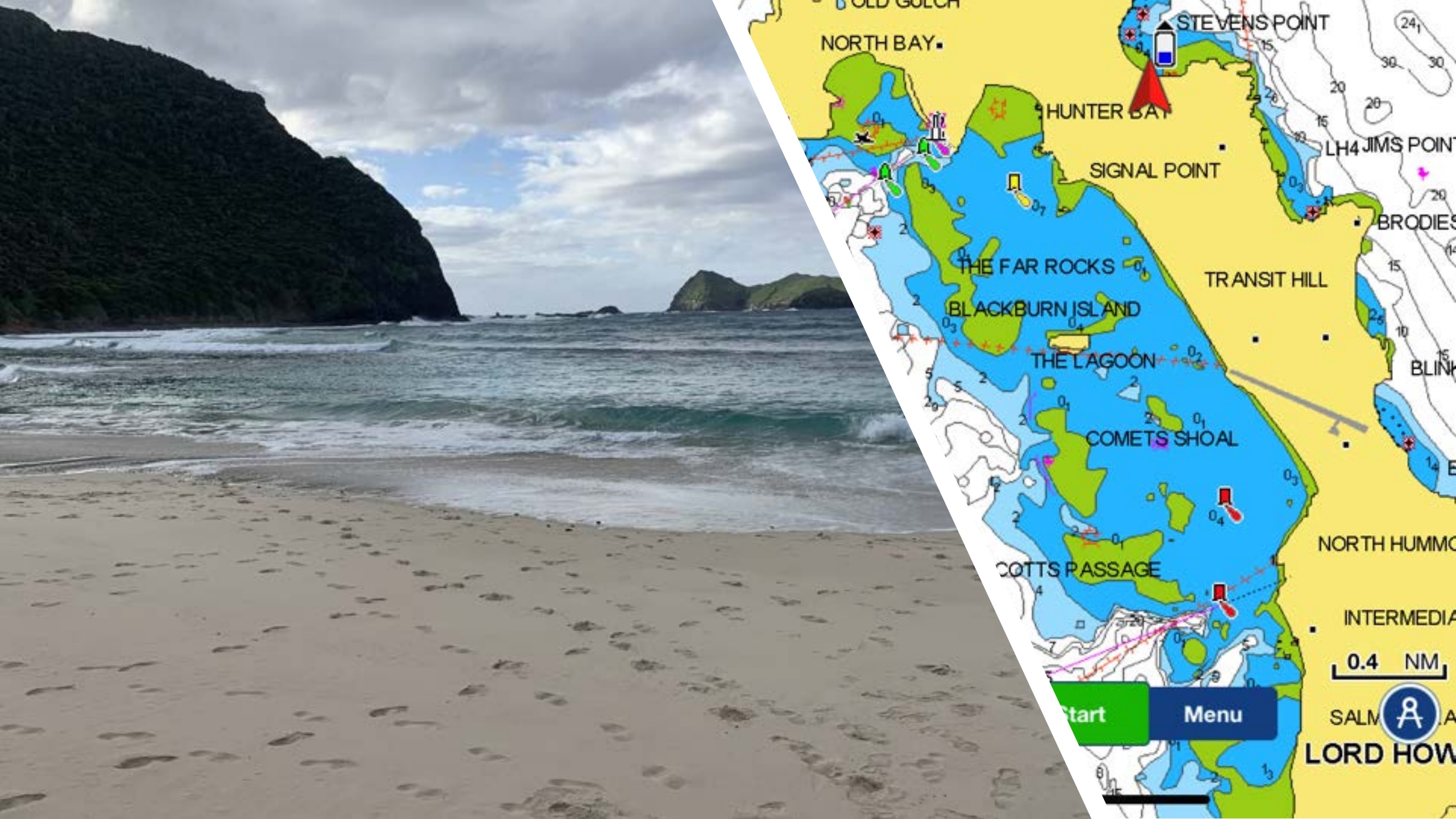












NORTH BAY

STEVENS POINT

HUNTER BAY

SIGNAL POINT

THE FAR ROCKS

BLACKBURN ISLAND

THE LAGOON

COMETS SHOAL

COTTS PASSAGE

TRANSIT HILL

LH4 JIMS POINT

BRODIES

BLINK

NORTH HUMMO

INTERMEDIA

0.4 NM

SALM A

LORD HOWE

Start

Menu















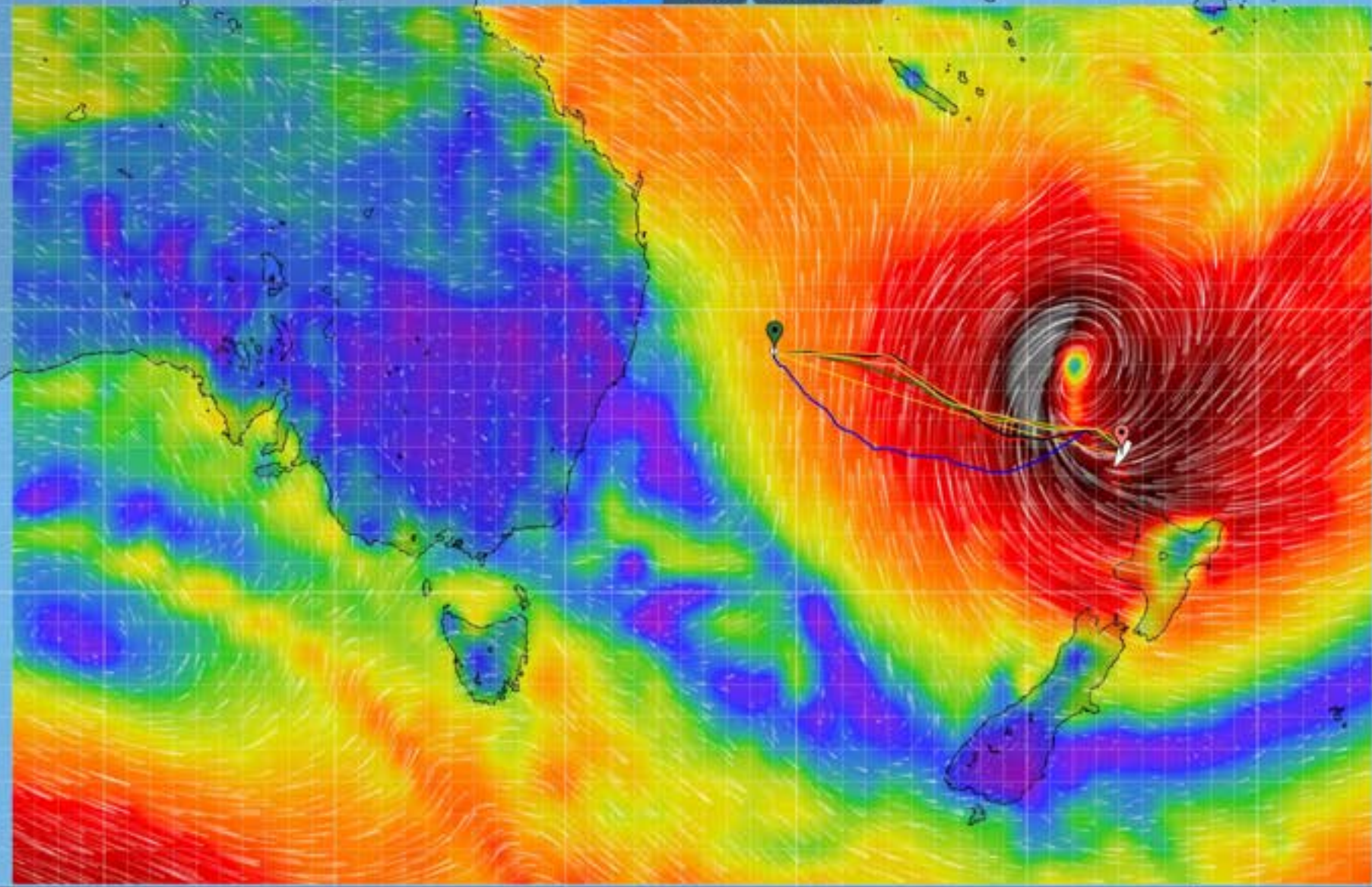




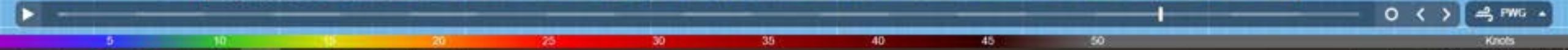


- GRIB
- Weather Routing 6.0 AM
- GMDSS Forecasts 6.0 AM
- Observations 0807.00
- Ocean Data 8.0 AM
- Departure Planning 12.0 AM
- Spot Forecast 8.0 AM
- Satellite Imagery 10.0 AM
- GPS Tracking 8.0 AM
- YB Tracking 8.0 AM
- Next forecast update in 9.6 hrs
- Download 1.2 AM

Map Tables Toggle Routes



Mon 25 Apr 17:37 GMT+10.5



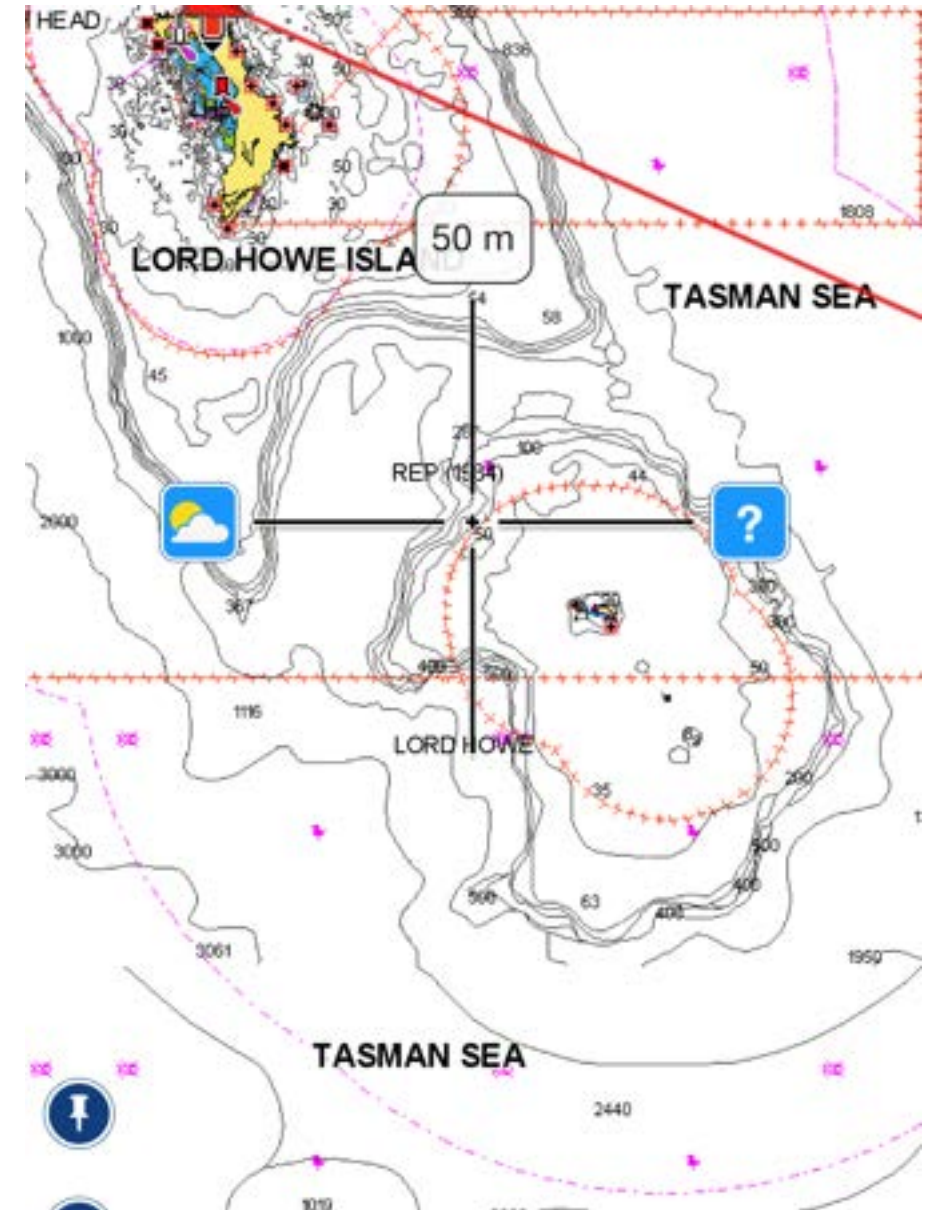






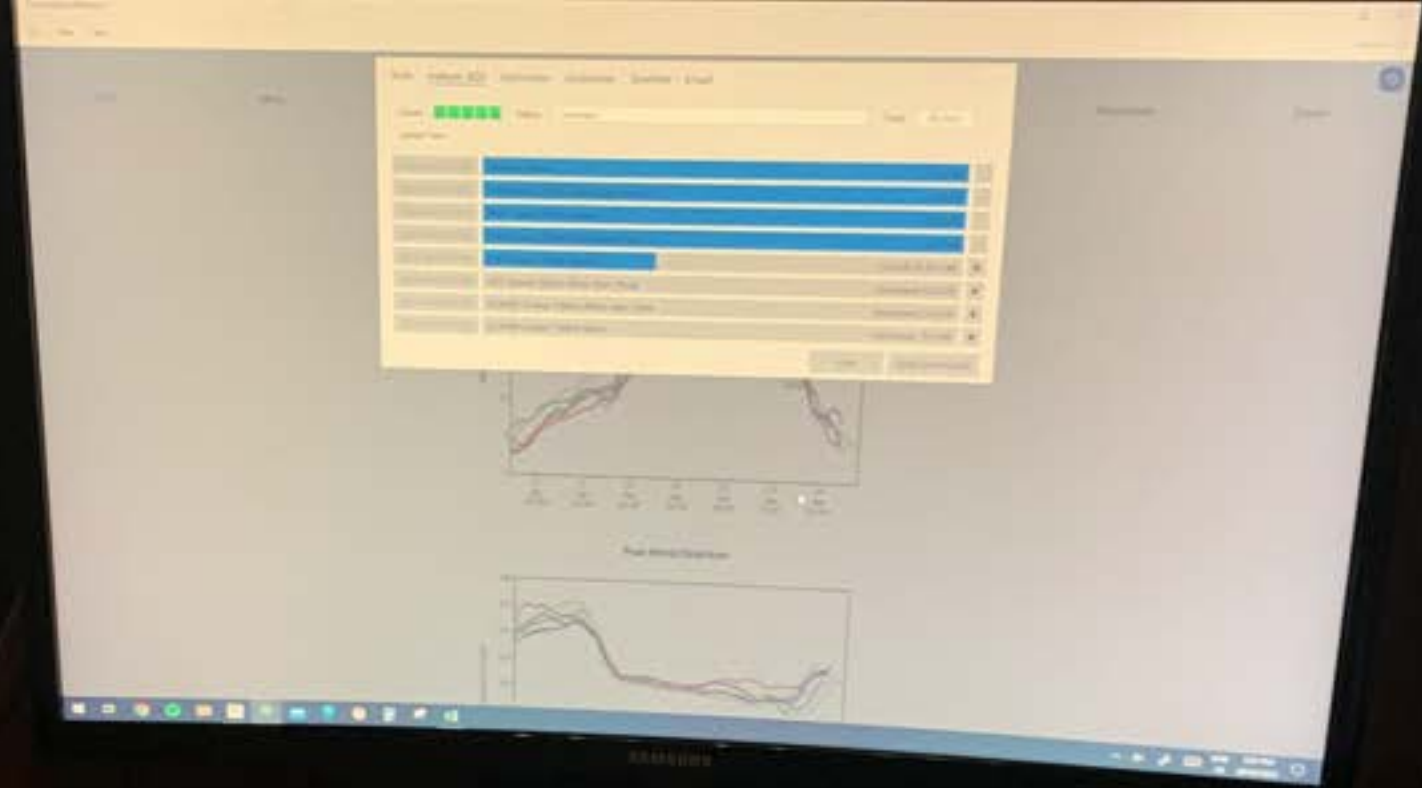












A weather map showing a color-coded background with isobars and wind vectors. A mouse cursor is hovering over a point on the map, which has triggered a data tooltip. The tooltip is a dark blue rectangle with white text. The map background has a color gradient from light green on the left to light blue on the right. Several black lines representing isobars are visible, with some labeled with values like 1016 and 1012. Wind vectors are shown as small black lines with flags, indicating wind direction and speed. A white mouse cursor is positioned over a point on the map, and a semi-transparent dark blue tooltip box is overlaid on the map, containing white text with weather data.

Thu 21 Apr 11:47 GMT+10.5

Wind Speed: 11 knots

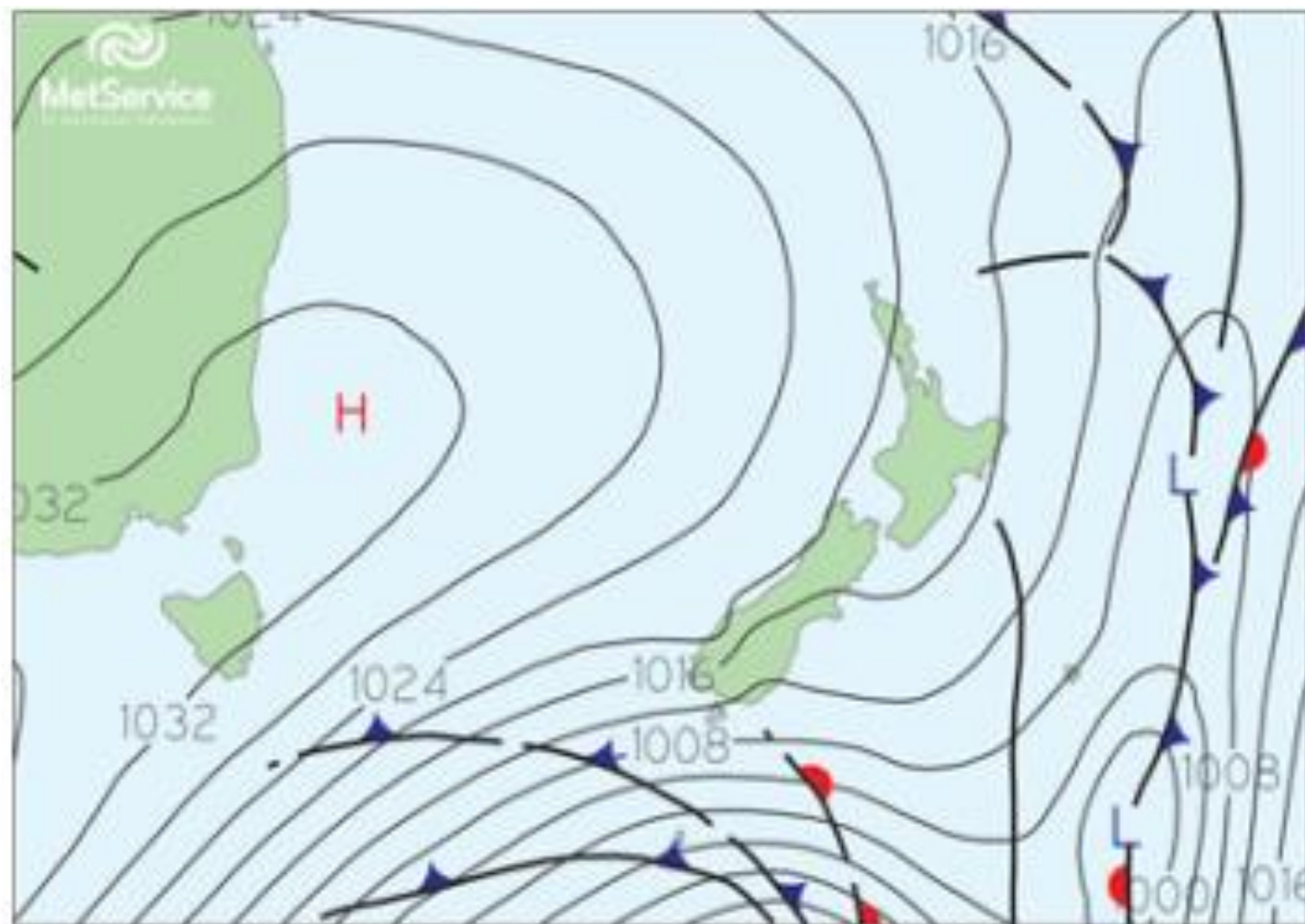
Wind Direction: 273° true

Pressure: 1016 hPa

Latitude: 33 28.713s

Longitude: 165 54.000e





Valid at 1pm NZ Daylight Time: Saturday, 23 April, 2022





**MANAKAI ZMP4354**

MMSI

**512008980**

Flag

**New Zealand**

**Fishing Vessel, Underway using Engine**

---m x ---m x ---m

Position

**34° 14.5855' S**

**172° 51.6545' E**

Destination

---

Speed

**6.10 kts**

Course

**308°**

Range

**3.69 NMI**

Bearing

**094°**

CPA

**1.84 NMI in**

Report Age

**7s**

ETA (UTC)

---

Heading

**300°**

Turn Rate

**> 5°/30s Left**

**14min 15s**

Create Waypoint

Record Track

OK

ETA @VMG

**18:21**

BRG

**122**

VMG

**7.21**

RNG

**15.8**

TTG @VMG

**02:11:36**

SAMSUNG

09:43 PM  
UK 28/04/2022







Meteo

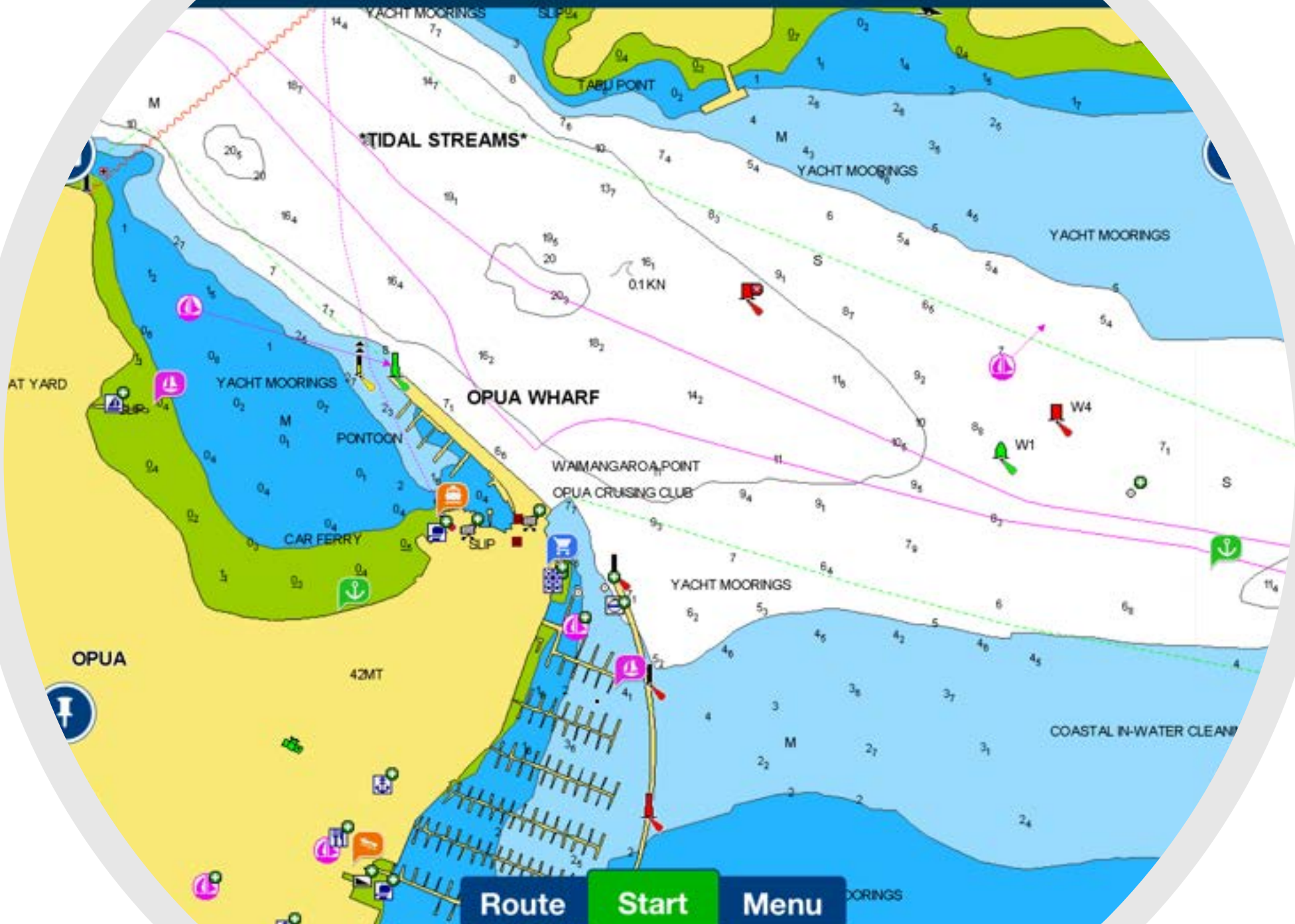




Meters

500 NM

Map navigation controls including zoom in (+), zoom out (-), a compass icon, and a menu icon.



Route Start Menu









