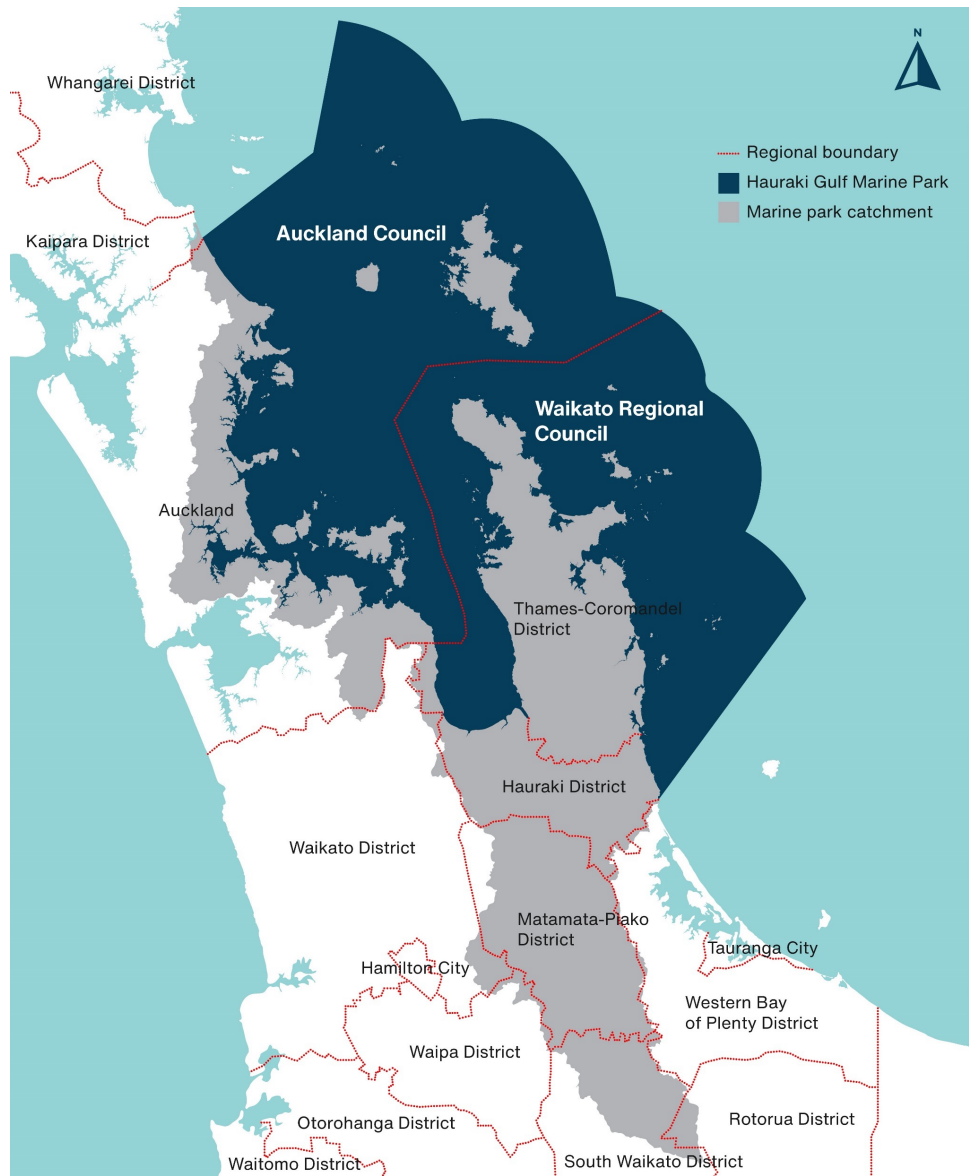




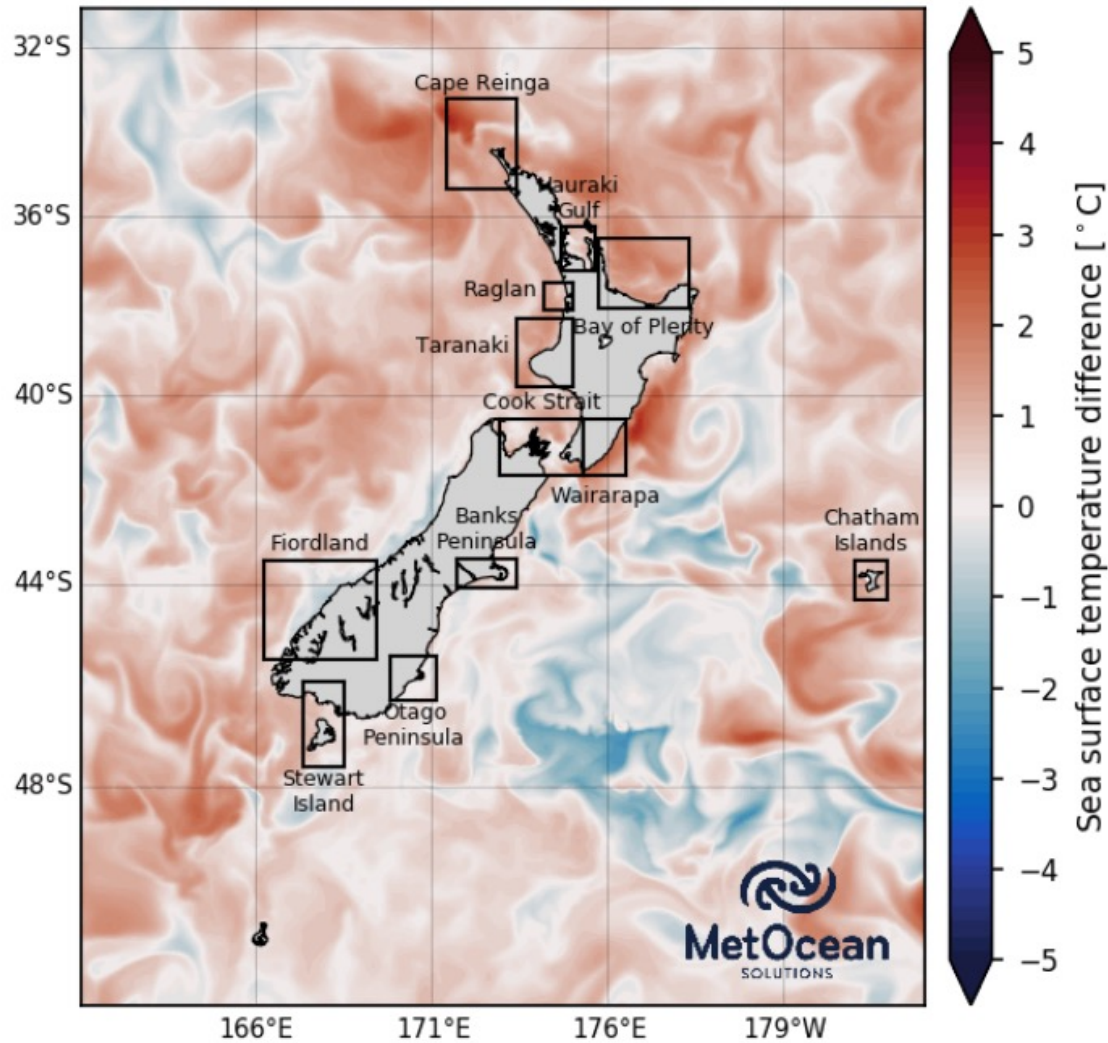
Latest developments re Hauraki Gulf Tikapa Moana, Te Moananui-ā-Toi

Alex Rogers
Chief Executive, Hauraki Gulf Forum



Hauraki Gulf Forum
 Tikapa Moana
 Te Moananui a Toi

Difference between forecast and average long-term
sea surface temperatures
2022-Jun-23





YOUTUBE.COM

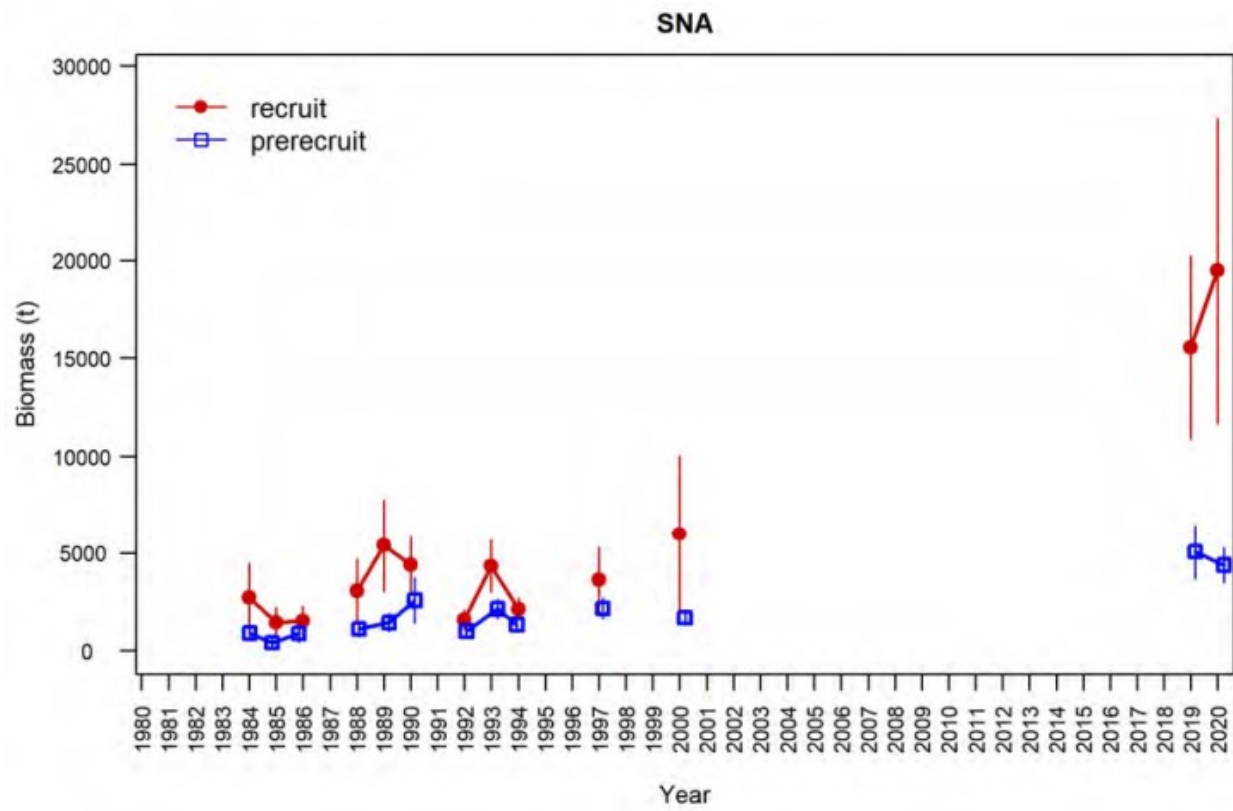
Marine heatwave and "melting" sponges in Te Moananui a Toi - the Hauraki Gulf, Aotearoa New Zealand



Hauraki Gulf Forum
Tikapa Moana
Te Moananui a Toi

Estimations of seabed contact for each of the fishing methods you specified for the last three fishing years in the Hauraki Gulf Marine Park (HGMP) are provided below. These estimates are based on a combination of fisher reported data (Electronic Reporting) which indicates the start and end points for fishing events, as well as vessel location data (Geographic Position Reporting) which is used to draw the track lines between the start and end positions.

Method	Estimated Area Swept (ha) in the HGMP	% of HGMP	Time period
Bottom trawl & Precision bottom trawl	266,445	19.0	October 2019 – September 2021 (October fishing years)
Danish seine	166,685	11.9	October 2019 – September 2021 (October fishing years)
Dredge	1,300	0.1	April 2019 – March 2021 (April fishing years)





Hauraki Gulf Forum
Tikapa Moana
Te Moananui a Toi

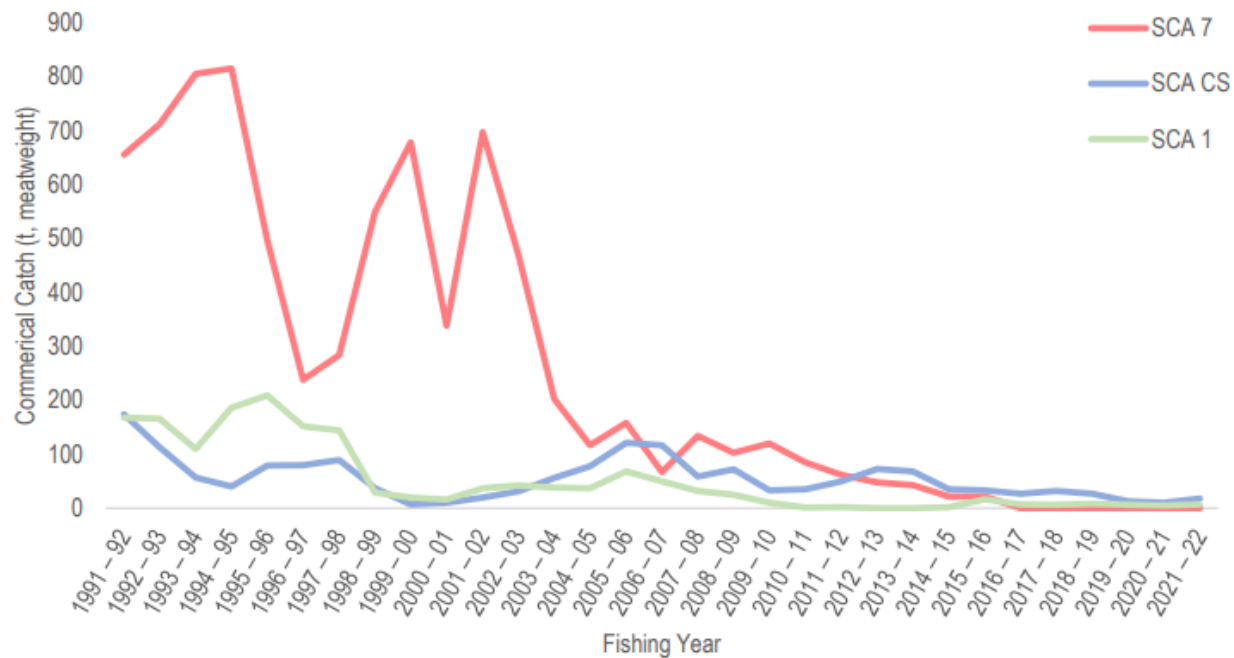
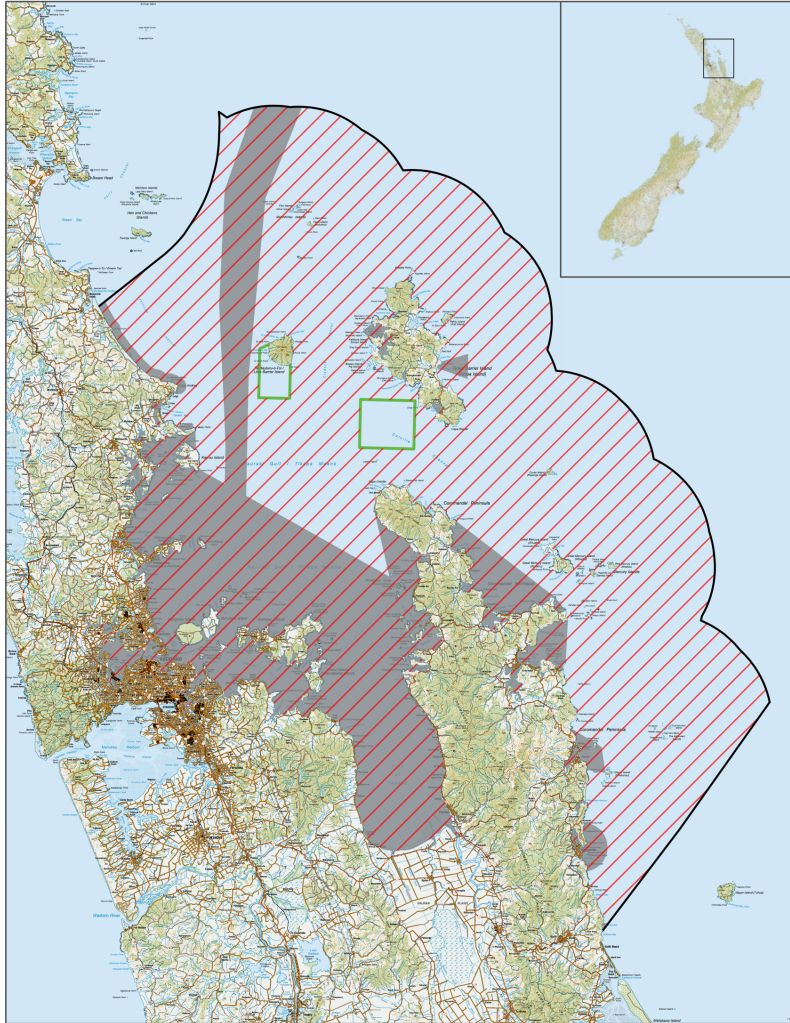


Figure 1: Historical commercial catch in the three main New Zealand scallop fisheries, Northland (SCA 1), Coromandel (SCA CS) and Southern (SCA 7) scallop fisheries from 1991 to 2022. The 2021-22 fishing year is incomplete.



Disclaimer: This map and all information accompanying it (the "Map") is intended to be used as a guide only, in conjunction with other data sources and methods, and should only be used for the purpose for which it was developed. The information shown in this Map is based on a summary of data obtained from various sources. While all reasonable measures have been taken to ensure the accuracy of the Map, and (i) except in liability exclusion in relation to any loss, damage or other costs leading to any person's use of the Map, including but not limited to any computer, database works or modifications of the Map, Crown copyright. This map is subject to Crown copyright administered by Ministry for Primary Industries (MPI).




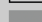
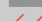

**Hauraki Gulf Marine Park Select Restrictions
Including Bottom Trawl and Danish Seine**

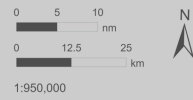
Date: 6/05/2022

Produced by: Spatial Intelligence

Reference: r220059

Coordinate System: NZGD 2000 New Zealand Transverse Mercator

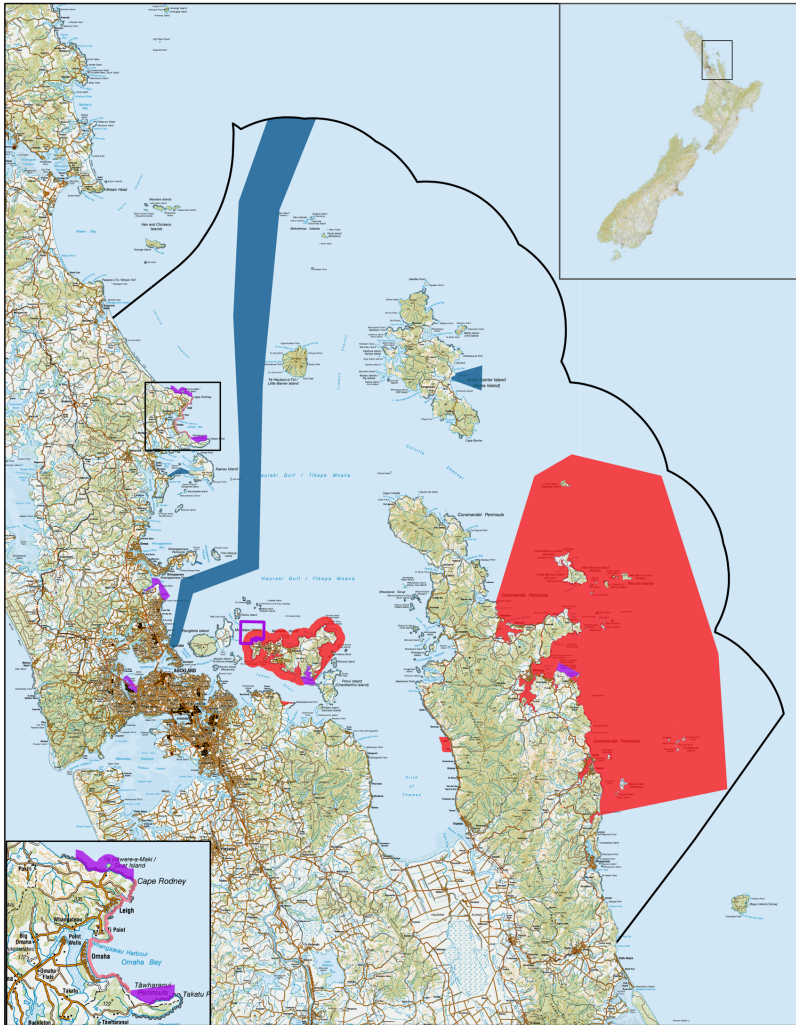
-  Hauraki Gulf Marine Park
-  Danish Seining and Bottom Trawl Restrictions
-  Closed Scallop Area
-  Open Scallop Area



Data Attribution:
This map uses data sourced from LINZ under CC-BY and © Geographx.



Disclaimer: This map and the information accompanying it (the "Map") is intended to be used as a guide only. It is compiled with various data sources and methods, and should not be used for the purposes for which it was developed. The information shown in the Map is based on a summary of data received from various sources. While all reasonable measures have been taken to ensure the accuracy of the Map, it is given no warranty or representation in relation to the accuracy, completeness, reliability or fitness for purpose of the Map and (b) except for liability established in relation to any work, damage or other costs relating to any person's use of the Map, including but not limited to any compilations, derivative works or modifications of the Map. Crown copyright ©. This map is subject to Crown copyright administered by Memory for Primary Industries (MPI).



Hauraki Gulf Marine Park Restrictions

Date: 5/05/2022
 Produced by: Spatial Intelligence
 Reference: r220059
 Coordinate System: NZGD 2000 New Zealand Transverse Mercator

- Hauraki Gulf Marine Park
- Proposed Marine Reserve
- Marine Reserve
- 186a Proposed Temporary Closures
- 186a Temporary Closures
- Cable Protection Zone



Data Attribution:
 This map uses data sourced from LINZ under CC-BY and © Geographix.



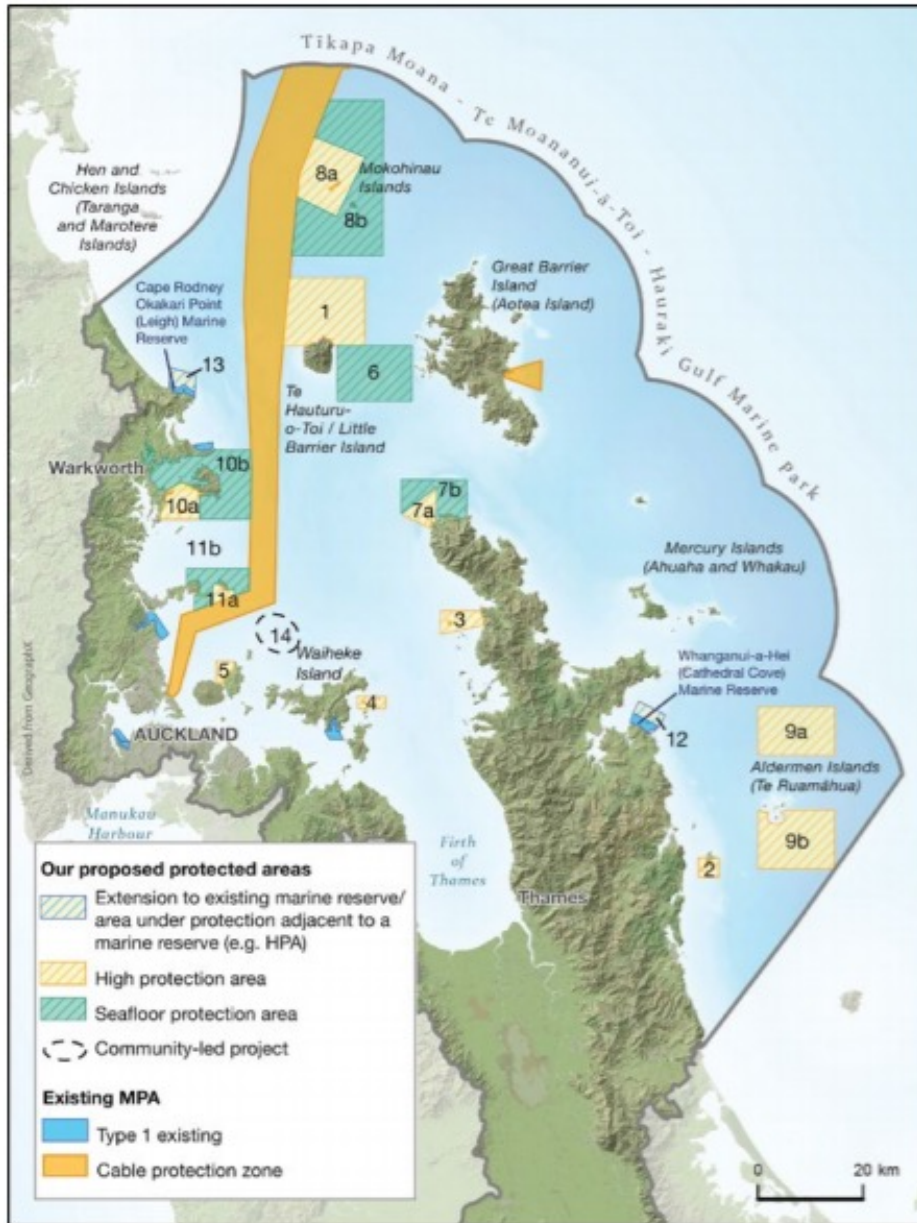
AT A GLANCE

Revitalising the Gulf

Government action on the Sea Change Plan



Hauraki Gulf Forum
Tikapa Moana
Te Moananui a Toi





Regenerating the Hauraki Gulf

Priority Causes:

Shellfish Restoration

Working to restore 1000sq km of shellfish beds and reefs

Regenerating Waterways

Regenerating the Hauraki Gulf's wetlands and waterways through riparian planting.

For more, visit:

[aucklandfoundation.org.nz/
hauraki-gulf-regeneration-fund](http://aucklandfoundation.org.nz/hauraki-gulf-regeneration-fund)

Or contact:

adele@aucklandfoundation.org.nz



Hauraki Gulf Forum
Tikapa Moana
Te Moananui a Toi



Thank you.

www.gulfjournal.org.nz